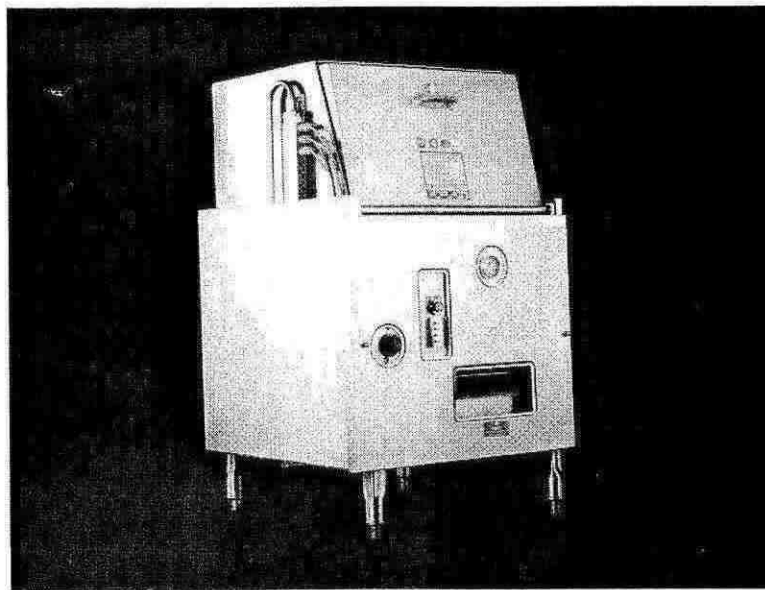




# **INSTRUCTION & PARTS MANUAL**

# **GLASSWASHER**



**STERO  
Dishwashing Machines**





# **INSTRUCTION AND PARTS MANUAL**

**STERO MODEL SGW-M GLASS WASHER  
WITH MECHANICAL TIMER**

**AND**

**STERO MODEL SGW-H-M WITH OPTIONAL PRE-HEATER  
AND MECHANICAL TIMER**

## **INTRODUCTION**

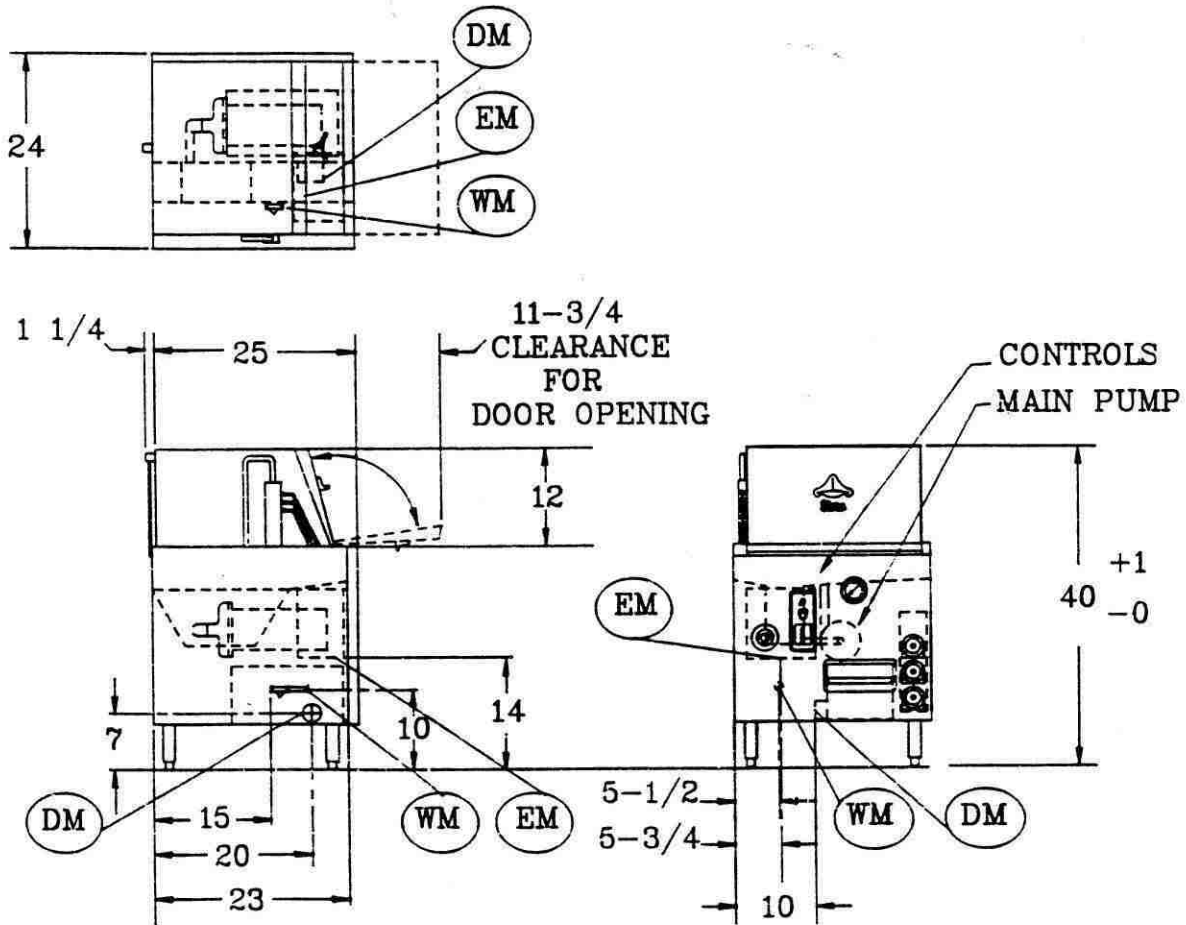
Careful attention to these instructions will insure long and satisfactory service from the Stero Glass Washing Machine.

## **SECTION 1**

Installation Instructions  
Operation  
Adjustments  
Maintenance  
Trouble Shooting Guide

## **SECTION 2**

Parts Drawings  
Parts Numbers & Description  
Wiring Diagram



### STERO GLASS WASHER SGW

(DM) DRAIN-2-1/4 I.D. HOSE CONNECTION

1 ONLY-115V. ELECTRICAL FEEDER

(EM) 1/3 H.P. MOTOR-115 V.-10 AMPS

2 K.W. HEATER (OPTIONAL) 115V.-17.4 AMPS

(WM) 3/8" NPT WATER SUPPLY-120° MIN.

# **The Stero Company**

## **WARRANTY POLICY**

*This warranty is in lieu of all other warranties, expressed or implied, including without limitation any implied warranty of merchantability, fitness for a particular purpose or non-infringement, and of any other obligation or liability on the part of Stero, whether in contract, strict liability, tort or otherwise.*

*The Stero Company warrants this equipment to be free from defects in material and workmanship, under normal use and operation, for a period of one (1) year from the date of initial start up or eighteen (18) months from the date of shipment from the factory, whichever comes first. This warranty is conditioned upon the customer's maintenance and care as outlined in the service manual and upon return of the warranty registration card. Repairs will be performed during Stero's authorized service agencies' normal business hours. If the customer requires after hours service the customer will be responsible for the overtime premium.*

*Machine is warranted only for the initial place of installation. Removal of machine automatically terminates the warranty.*

*Stero shall have no liability under this warranty unless the customer promptly notifies Stero or its factory authorized service agent of any alleged defects. All defective parts become the property of Stero and must be returned to Stero, or its agent, at Stero's expense, within thirty (30) days from the date of the part's replacement. Parts replaced within the warranty carry only the unexpired portion of the machine's warranty. Not covered by this warranty are changes (parts and/or labor) necessitated by or damage resulting from: water conditions, accident, alteration, improper use, abuse, tampering, improper installation or failure to follow operating and maintenance procedures. Examples of the foregoing, but without limitations are: (1) Damage to the machine resulting from excessive concentrations of chlorine or delimiting acid solutions; (2) Use with utility service other than designated on the rating plates; (3) Improper connection to utility service; (4) Inadequate or excessive water and/or steam pressure; (5) Leaks caused by faulty installation; (6) Component failures caused by water leaks due to faulty installation; (7) Failure to comply to local building codes; (8) Failures due to deposits resulting from water or steam conditions, detergents, chemicals, or improper cleaning; (9) Resetting breakers, overloads, or safety thermostats; (10) Adjustments of thermostats after 90 days of operation; (11) Improper opening of utility supply valves; (12) Cleaning drain valves, line strainers, rinse nozzles, etc.; (13) Improper installation or malfunction of chemical dispensing equipment supplied by others; and (14) Failure to provide regular maintenance and daily cleaning as outlined in the service manual. In no event will Stero be liable for loss or damage to or loss of use of facilities or other property, additional labor costs, loss of revenue, loss of anticipated profits, or other damages of any kind what so ever, whether direct, indirect, incidental or consequential.*

## **UL 73 Grounding Instructions:**

**This Appliance must be connected to a grounded, metal, permanent wiring system; or an equipment-grounding conductor must be run with the circuit conductors and connected to the equipment-grounding terminal or lead on the appliance.**

## INSTALLATION INSTRUCTIONS

1. Set machine in place.  
Level machine side to side and front to back.
  - A. Level adjustment made by screwing adjustable feet in or out as necessary.
2. Make final plumbing and electrical connections per tags attached to connection points. (See page 2).
  - A. Plumbing connections.
    1. One (1)  $\frac{3}{8}$ " N.P.T. 140° water supply.  
*NOTE: Install shut off valve prior to machine connection.*
    2. One (1) 2 $\frac{1}{4}$ " I.D. hose drain connection.
  - B. Electrical connections.  
*NOTE: ALL STERO GLASS WASHERS ARE 115 VOLTS, SINGLE PHASE.*
    1. The terminal strip is located in the control box and is marked L1 N. A knock-out is provided in the bottom of the control box for your electrical conduit.
    2. Some glass washers are equipped with an optional 2 KW heater to maintain water temperatures at between 120° and 140° f. (Model SGW-H).  
*NOTE: See name plate on door of the machine and size circuit breaker and wire accordingly.*

**COMPLY WITH LOCAL ELECTRICAL CODES.**

## OPERATION: START-UP

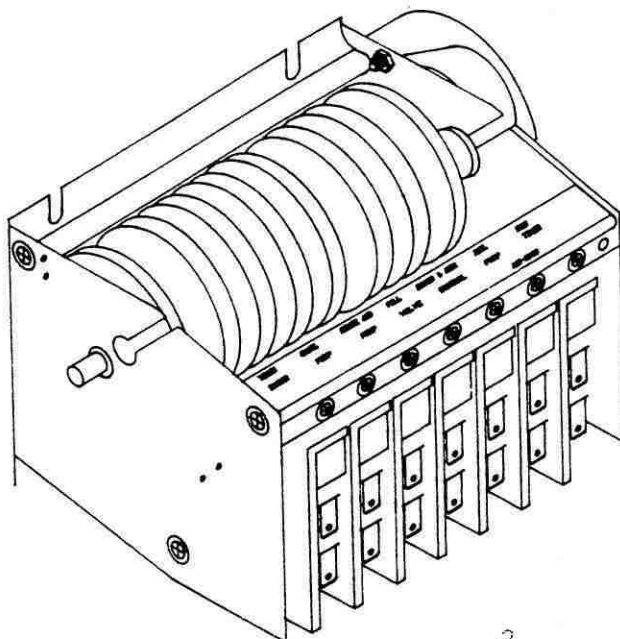
1. Make sure drain plug is seated in drain.
2. Pump intake screen in place.
3. Fill the machine by pressing fill toggle switch to left.  
*NOTE: Fill to  $\frac{1}{2}$ " below overflow.*
4. Be sure revolving wash arm is in place with end caps tightly secured—spin to test for free rotation.
5. Set thermostat at 140° (when equipped with optional pre-heater). See Fig. 1
6. Close door—press start switch and hold down for 2 to 5 seconds—door must be closed as machine is equipped with a door safety switch.
7. Stop Run Hold switch must be in center (run) position. Hold position will stop the cycle timer in whatever cycle the machine is running. This is primarily for processing the glasses and/or chemically cleaning the machine.



Fig. 1

## SEQUENCE OF EVENTS

1. Wash cycle-40 seconds.
  - A. Detergent dispensing pump is energized during wash cycle.
2. Drain-11 seconds.
3. Flush-4 seconds. (Before the drain closes, the fill solenoid valve will open. The pump motor will come on and the machine will be flushed of any debris or detergent residue).
4. Fill-Drain closes at end of 4 seconds. Flush and fills to proper level -  $\frac{1}{2}$ " below overflow. This time depends on water pressure of supply - approximately 15 seconds.
  - A. Sanitizer and rinse aid pumps activated during fill and rinse.
5. Rinse-20 seconds.



2

## ADJUSTMENTS

The machine has been thoroughly tested and adjustments have been made at the factory. Due to differences in water pressure, the water level may have to be adjusted. This is done by removing the cover from the pressure switch, located behind the front panel, between the start switch and temperature gauge. Turn the adjustment screw clockwise to raise the water level, counter-clockwise to lower water level.

## CHEMICAL DISPENSING SYSTEM

Your glass washer is equipped with a complete liquid chemical dispensing system, consisting of the following:

1. Three (3) peristaltic pumps with color coded tubing.
  - A. Detergent - Red tubing
  - B. Sanitizer - White tubing
  - C. Rinse Aid - Blue tubing
2. Chemical Adjustments.

All chemicals are produced in varying concentrations and therefore, the chemical supplier **MUST** adjust the dispensers to deliver the proper amount of chemical required to give good results.



## CHEMICAL ADJUSTMENTS (Cont.)

To adjust the amount of chemical dispensed, locate the appropriate cam on the 7 cam mechanical timer. Turn the right side of this cam with the timer wrench. Opening the gap will increase the amount of chemical dispensed. The timer is shown in Fig. 2.

**NOTE:** Excessive rinse aid will cause foaming. Foam reduces the wash and rinse pressure to an unacceptable level. If foam is observed on glasses or in machine, check water temperature. If above 120°, have the chemical supplier decrease quantity of rinse additive being injected.

**NOTE:** Chlorine concentration should be kept at 50 PPM. Excessive chlorine will create a chlorine odor around the machine area and cause a cloudy grey film to appear on the clean glassware.

**CAUTION:** Chlorine is corrosive. Excessive concentrations will damage your glass washer.

## MAINTENANCE

Your new SGW-M is easy to maintain.

Since soils, washed from the glassware are discharged from the machine during the drain and flush cycle the interior of the machine remains relatively clean.

### DAILY MAINTENANCE

1. Remove and inspect the spray area, paying close attention to the sprayers to see that they are free of any debris that might interrupt the spray pattern. If a sprayer is clogged, simply loosen the wash arm end caps, push the debris back through the sprayer, into the wash arm and rinse out. Be sure slot in arm bushing is clean.
2. Remove and clean pump intake screen.
3. Remove and clean scrap screen from drain sump.
4. Check level of chemical containers, replace as necessary. When replacing chemical containers use prime switch to prime the pumps. Operate the machine several times after priming the chlorine sanitizer pump. This will wash the concentrated chlorine off of the interior of the glass washer.

Now that all spray jets, pump intake screen and drain sump screen have been cleaned, replace as follows:

1. Replace scrap screen in drain sump.
2. Replace pump intake screen.
3. Replace spray arm.

**NOTE:** *Be sure spray arm bushing and pivot pin are free of any grit that may slow down or keep the spray arm from revolving.*

### WEEKLY (or as necessary):

1. Remove the scrap screen from the drain sump and thoroughly clean the interior of the drain sump. This cleaning is necessary to avoid any odors created by scrap which may have been allowed to fall from the scrap screen into the sump itself.

### MONTHLY:

1. Remove four spray jets from upper spray jet manifold and clean if clogged.

## SGW AND SGW-H DISHWASHERS - TROUBLE SHOOTING GUIDE

PROBLEM	LOOK FOR	CORRECTION
MACHINE WILL NOT FILL	<ol style="list-style-type: none"> <li>1) Closed water supply valve.</li> <li>2) Plugged line strainer.</li> <li>3) Defective pressure switch.</li> <li>4) Defective fill valve.</li> <li>5) Drain valve open.</li> <li>6) Defective fill switch.</li> <li>7) Defective Timer.</li> </ol>	<ol style="list-style-type: none"> <li>1) Open valve.</li> <li>2) Remove &amp; clean screen.</li> <li>3) Check &amp; replace if necessary.</li> <li>4) Check &amp; replace if necessary.</li> <li>5) Check seat for food particles, check "O" ring (broken or out of place).</li> <li>6) Replace fill switch.</li> <li>7) Check fill Micro Switch on Timer.</li> </ol>
MACHINE WILL NOT START	<ol style="list-style-type: none"> <li>1) Tripped circuit breaker.</li> <li>2) Defective door switch.</li> <li>3) Stop-Run-Hold switch not in run position.</li> <li>4) Start Switch not depressed long enough.</li> </ol>	<ol style="list-style-type: none"> <li>1) Reset breaker in customer breaker panel.</li> <li>2) Check &amp; replace if necessary.</li> <li>3) Switch to run.</li> <li>4) Hold start switch in for 5 seconds.</li> </ol>
MACHINE OVERFILLS Fill level is to 1/2" of overflow. DO NOT UNDERFILL	<ol style="list-style-type: none"> <li>1) Pressure switch not adjusted properly.</li> <li>2) Defective pressure switch.</li> <li>3) Defective fill valve.</li> <li>4) Defective Timer.</li> </ol>	<ol style="list-style-type: none"> <li>1) Remove cover from pressure switch (which is located behind the front cover panel, between the control box &amp; temperature gauge) using screw driver, turn adjustment screw counter-clockwise.</li> <li>2) Check &amp; replace if necessary.</li> <li>3) Check &amp; replace if necessary.</li> <li>4) Adjust, repair, or replace.</li> </ol>
DRAIN HOLDING TANK OVERFLOWING	<ol style="list-style-type: none"> <li>1) Holding tank scrap screen plugged.</li> <li>2) Holding tank drain line plugged.</li> <li>3) Check water lever for over-filling.</li> </ol>	<ol style="list-style-type: none"> <li>1) Clean scrap screen.</li> <li>2) Clean out drain line.</li> <li>3) Adjust water level.</li> </ol>
PUMP MOTOR KICKING OUT Rating plate on motor - will show voltage & amp limit.	<ol style="list-style-type: none"> <li>1) Wrong motor rotation.</li> <li>2) Wrong line voltage.</li> <li>3) Broken glass, dish, silver, etc. in wash pump.</li> <li>4) Water level too low.</li> </ol>	<ol style="list-style-type: none"> <li>1) Change rotation.</li> <li>2) Check with voltmeter.</li> <li>3) Remove pump &amp; clean housing - check intake &amp; discharge sides &amp; clean if necessary.</li> <li>4) Adjust water level.</li> </ol>

<p>NOT WASHING PROPERLY</p>	<ol style="list-style-type: none"> <li>1) Spray arm plugged.</li> <li>2) Spray arm not revolving.</li> <li>3) Empty detergent container.</li> <li>4) Low water level.</li> </ol>	<ol style="list-style-type: none"> <li>1) Remove &amp; clean arm body &amp; jets.</li> <li>2) Remove &amp; clean arm &amp; clean shaft &amp; bushing (clean groove in bushing).</li> <li>3) Call detergent representative.</li> <li>4) Adjust fill to proper level.</li> </ol>
<p>NOT RINSING PROPERLY</p>	<ol style="list-style-type: none"> <li>1) Check rinse aid injector.</li> <li>2) Low water level.</li> <li>3) Not draining wash water completely.</li> </ol>	<ol style="list-style-type: none"> <li>1) Not working - call detergent representative.</li> <li>2) Check fill system &amp; adjust or correct as necessary.</li> <li>3) Check, if overfilling and/or drain not opening. Correct as necessary.</li> </ol>
<p>WATER LEAKING OUT OF DOOR</p>	<ol style="list-style-type: none"> <li>1) Spray arms not revolving</li> <li>2) Spray arm clean-out caps not in place.</li> <li>3) No dish rack in machine.</li> </ol>	<ol style="list-style-type: none"> <li>1) Remove spray arms. Clean nozzles, bushings &amp; arm body.</li> <li>2) Reset clean-out caps.</li> <li>3) Place rack in machine.</li> </ol>
<p>MACHINE STAYS IN WASH MODE</p>	<ol style="list-style-type: none"> <li>1) Check Stop-Hold-Run switch.</li> </ol>	<ol style="list-style-type: none"> <li>1) If in HOLD position, switch to run.</li> </ol>
<p>BLOWS FUSES OR BREAKER</p>	<ol style="list-style-type: none"> <li>1) Grounded wire.</li> <li>2) Loose electrical connection.</li> <li>3) Defective detergent equipment.</li> <li>4) Drain solenoid plunger binding.</li> </ol>	<ol style="list-style-type: none"> <li>1) Check wiring - repair or replace wire as necessary.</li> <li>2) Tighten connection.</li> <li>3) Disconnect &amp; call detergent representative.</li> <li>4) Check drain solenoid for loose base plate fasteners. If loose, align solenoid &amp; tighten base plate fasteners. Replace solenoid if necessary.</li> </ol>
<p>WASH TANK WON'T HOLD WATER</p>	<ol style="list-style-type: none"> <li>1) Food particles holding drain pipe from seating.</li> <li>2) Drain not closing.</li> <li>3) Defective "O" ring.</li> <li>4) Defective drain solenoid.</li> </ol>	<ol style="list-style-type: none"> <li>1) Clean drain valve and seat.</li> <li>2) Adjust linkage between drain body &amp; drain solenoid.</li> <li>3) Replace "O" ring.</li> <li>4) Check &amp; replace as necessary.</li> </ol>
<p>WON'T FEED DETERGENT OR RINSE AID OR CHLORINE</p>	<ol style="list-style-type: none"> <li>1) Check detergent container.</li> <li>2) Plugged detergent tubing.</li> <li>3) Check terminals provided for dispensing equipment to be sure dispensing equipment is fed electrically during wash cycle (detergent) &amp; rinse cycle (rinse injector &amp; chlorine pumps).</li> <li>4) Pump(s) not running.</li> </ol>	<ol style="list-style-type: none"> <li>1) If empty - replace with full container - use priming switch to get flow started.</li> <li>2) Call detergent representative.</li> <li>3) Replace the mechanical timer or its micro switches as necessary.</li> </ol>

## COMPONENT PARTS, DRAWING AND PART NUMBERS

### TABLE OF CONTENTS

	Page
Stero Glass Washer (with pre-heater/without pre-heater) .....	11
Glass Washer - Main assembly .....	12
Parts description and numbers .....	13
Pressure spray manifolds, upper & lower assemblies	
Including pump & pressure switch .....	14
Parts description and numbers .....	15
Pump Assembly (Price Pump) .....	16
Parts description and numbers .....	17
Pump Assembly (Gould) .....	18
Parts description and numbers .....	19
Door pivot & spring balance assemblies .....	20
Parts description and numbers .....	21
Drain Assembly .....	22
Parts description and numbers .....	23
Drain solenoid assembly .....	24
Parts description and numbers .....	25
Chemical pump housing assembly .....	26
Parts description and numbers .....	27
Control box assembly .....	28
Parts description and numbers .....	29
Water supply piping with chemical injection	
Tower assembly .....	30
Parts description and numbers .....	31
Solenoid Valve .....	32
Parts description and numbers .....	33
Wiring Diagram .....	34

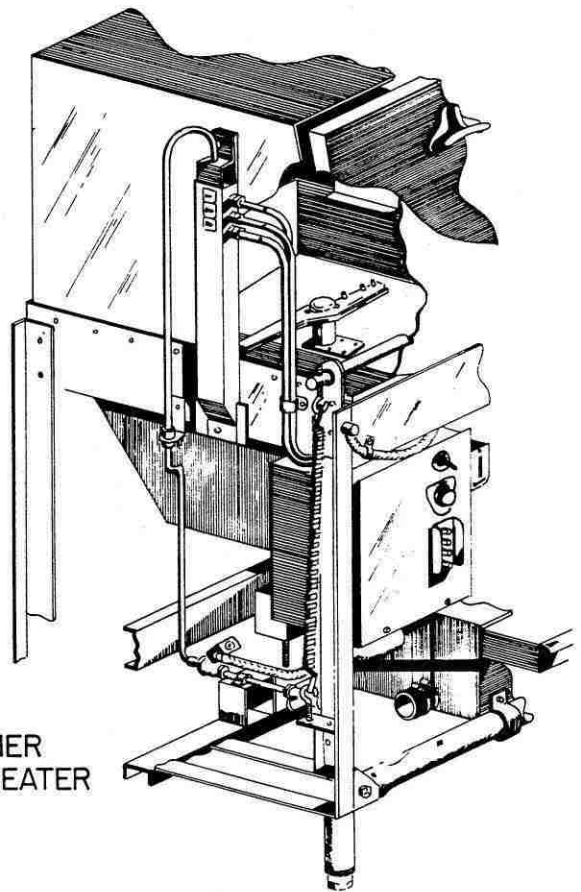
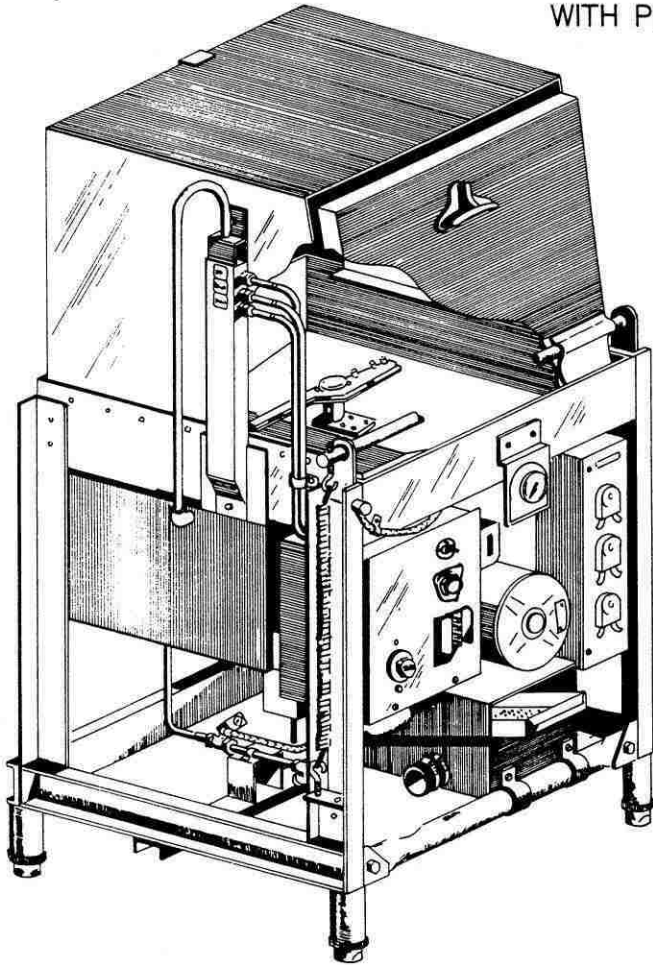
When ordering parts, specify ONLY parts pertaining to your model machine.

#### **IMPORTANT**

Always include model number, serial number  
and parts number of your machine with your order.

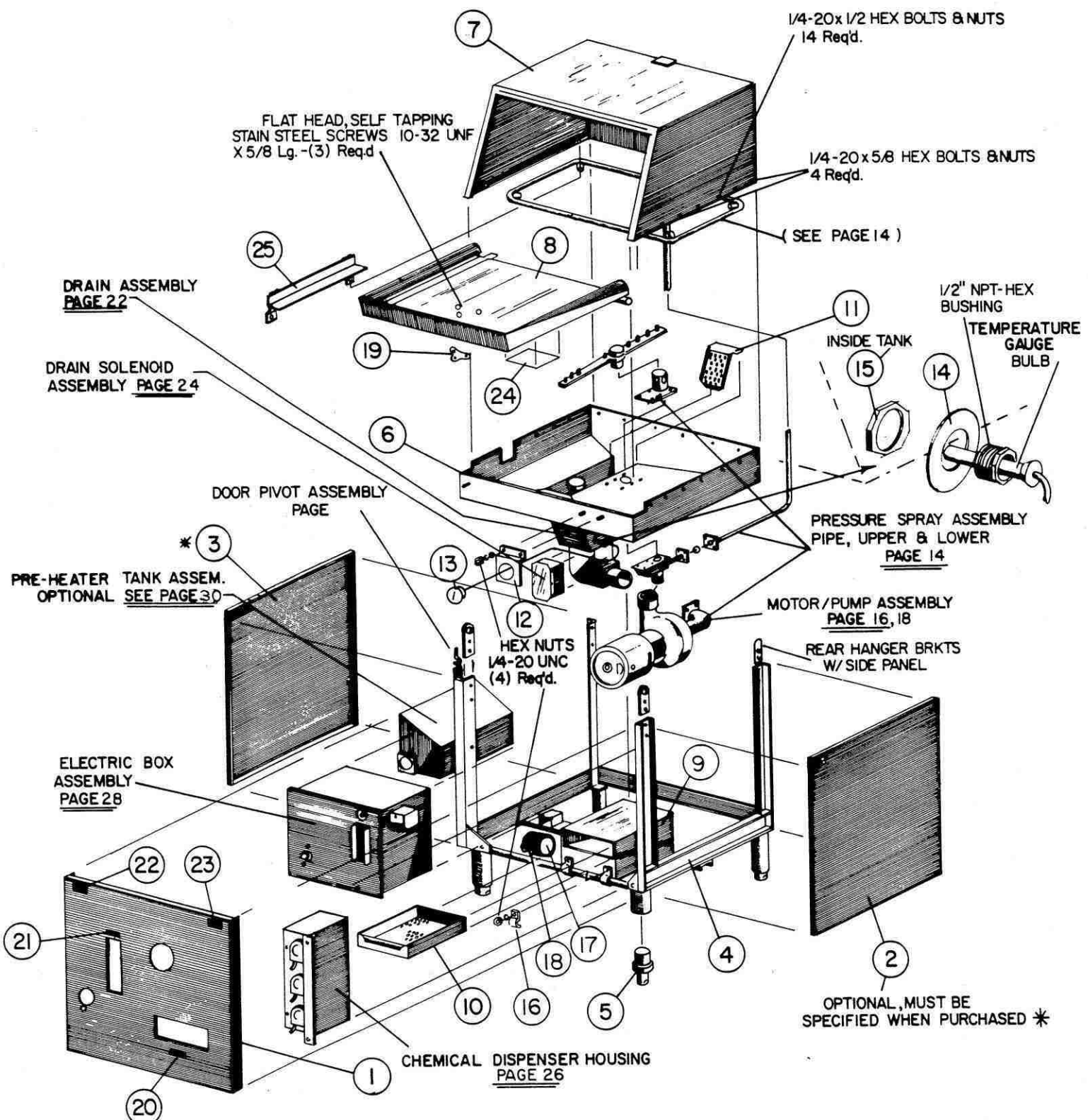
The model and serial number will be found  
on the name plate located on the door of the machine.

GLASS WASHER  
WITH PRE HEATER



GLASS WASHER  
WITHOUT PRE HEATER

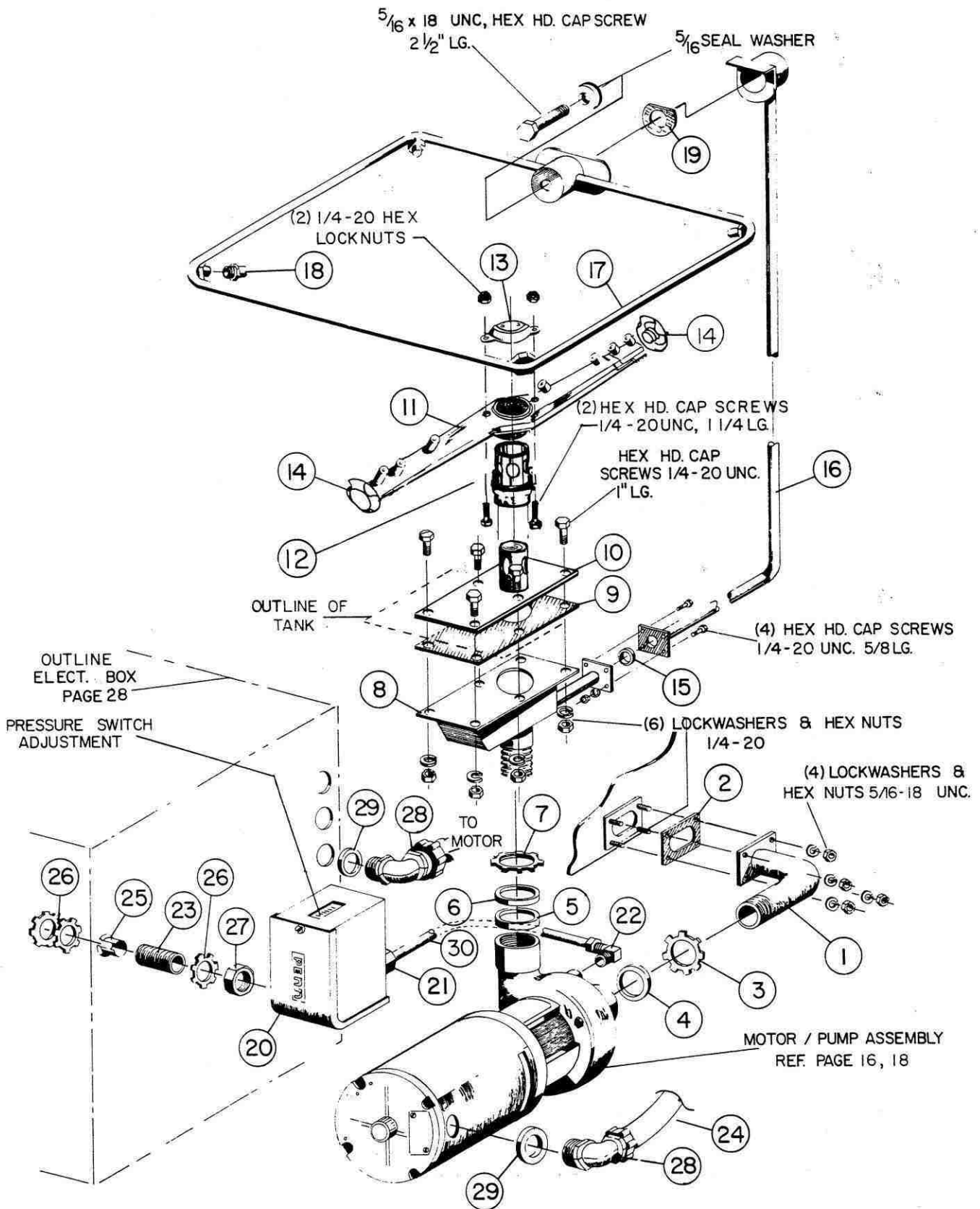
STERO'S SGW GLASS WASHER  
(FRONT & SIDE PANELS NOT SHOWN)



# SGW GLASS WASHER MAIN ASSEMBLY

# MAIN ASSEMBLY - PARTS LIST

ITEM	DESCRIPTION	REMARKS	PART NO.
1	PANEL FRONT		B10-1351
2	PANEL SIDE - RIGHT HAND	OPTIONAL EQUIP	B10-1352
3	PANEL SIDE - LEFT HAND	OPTIONAL EQUIP	B10-1353
4	FRAME		B10-1354
5	FOOT - ADJUSTABLE		P60-1101
6	WASH TANK COMPLETE		B10-1355
7	HOOD - SINGLE DOOR SLANTED		B10-1356
8	DOOR - SLANTED SINGLE		B10-1357
9	DRAIN - SUMP TANK		B10-1358
10	DRAIN - SUMP STRAINER PAN		B10-1359
11	PUMP INTAKE SCREEN		A10-1415
12	TEMPERATURE GAUGE BRACKET		B10-1444
13	TEMPERATURE GAUGE		P65-1135
14	TEMPERATURE GAUGE BACK-UP RING		A10-1445
15	LOCKNUT S.S. 1/2"		A10-1446
16	DRAIN TANK BRACKETS		A10-1447
17	HOSE		P57-1137
18	CLAMP		P60-1138
19	DOOR HANDLE		B59-1448
20	LABEL - "SCRAP CATCHMENT STRAINER PAN"		A69-1450
21	LABEL - "WARNING DISCONNECT ALL POWER"		A69-1449
22	LABEL - "DOOR SAFETY SWITCH"		A69-1451
23	LABEL - "HAVE FRONT PANELS IN PLACE"		A69-1452
24	LABEL - "OPERATING INSTRUCTIONS"		A69-1453
25	TRACK GUIDES		A10-1500

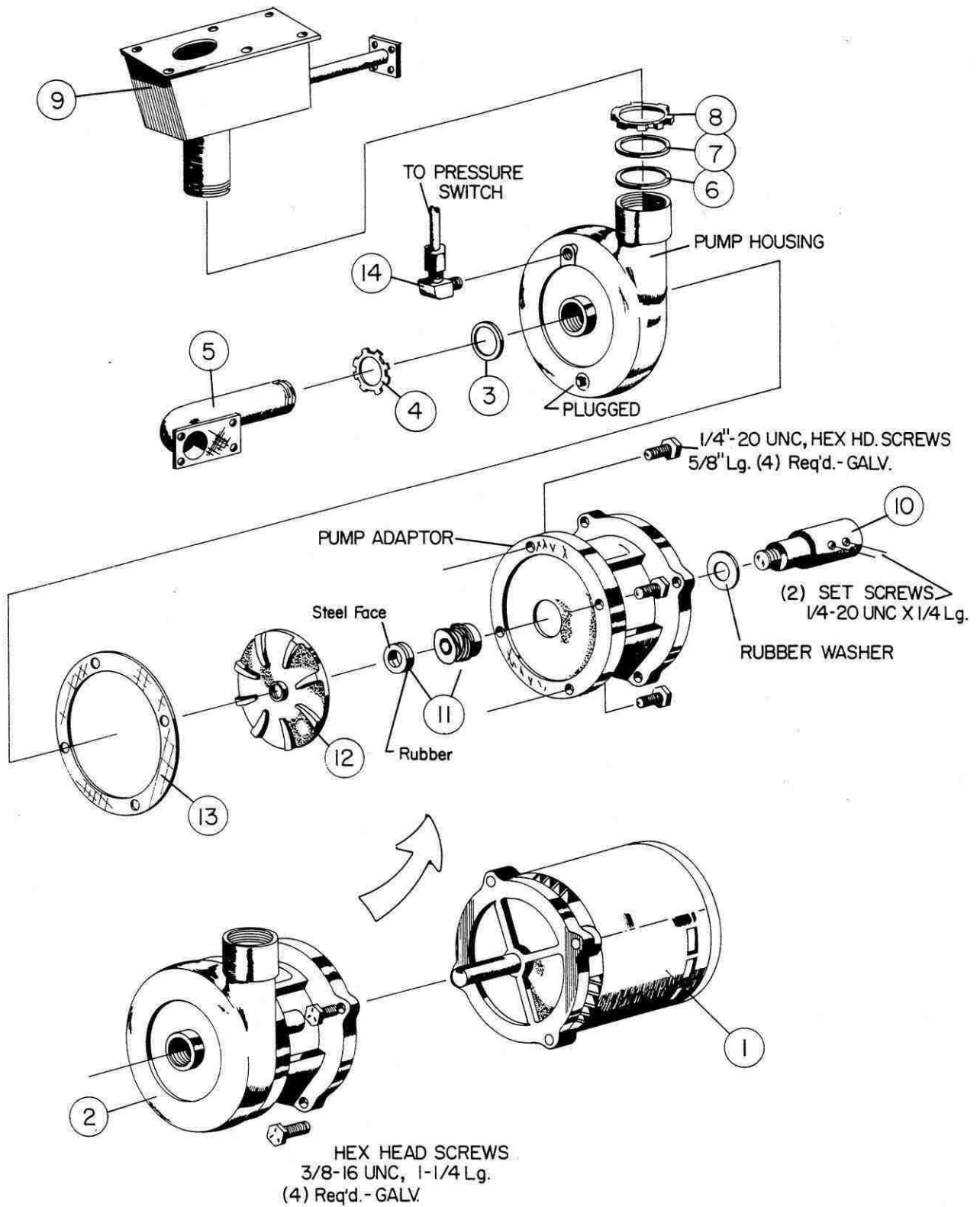


PRESSURE SPRAY MANIFOLDS, UPPER AND LOWER ASSEMBLIES INCLUDING PUMP & PRESSURE SWITCH.



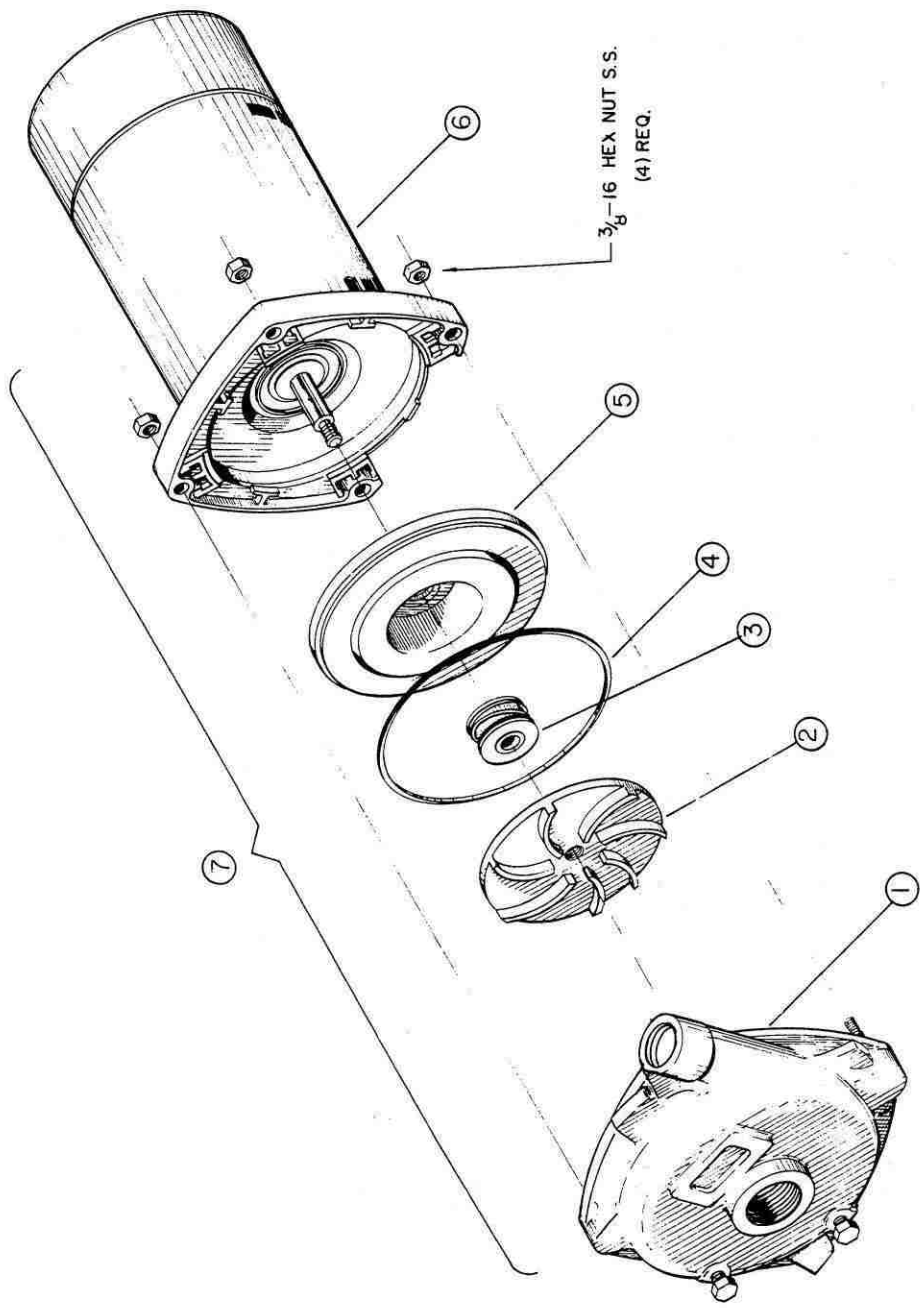
PRESSURE SPRAY MANIFOLDS UPPER & LOWER  
PUMP & PRESSURE SWITCH PARTS LIST

ITEM	DESCRIPTION	REMARKS	PART NO.
1	PUMP SUCTION TUBE ASSEMBLY		A10-1361
2	GASKET PUMP SUCTION TUBE FLANGE	2 REQUIRED	A57-1341
3	LOCKNUT, CONDUIT - 1 1/4"		P52-1031
4	SEAL RING - 1 1/4"		P52-1032
5	SEAL RING - 1"		P52-1033
6	WASHER BACK-UP FOR SEAL RING		A10-1362
7	LOCKNUT, CONDUIT - 1"		P52-1034
8	MANIFOLD TEE BOTTOM BOX ASSEMBLY		B10-1363
9	GASKET MANIFOLD TEE BOX		A57-1365
10	WASH ARM PIVOT PIN ASSEMBLY		A10-1366
11	WASH ARM		C10-1367
12	BUSHING - WASH ARM		A10-1735
13	COVER - WASH ARM TOP		A10-1339
14	END CAPS - WASH ARM		A10-4131
15	□ RING		P57-2031
16	RISER TUBE ASSEMBLY		A10-1368
17	SPRAY MANIFOLD ASSEMBLY UPPER		B10-1371
18	SPRAY JETS	4 REQUIRED	B10-1062
19	GASKET - RISER TO MANIFOLD		A57-1373
20	PRESSURE SWITCH		P54-1103
21	1/4" TUBE x 1/8" MIP ST. FITTING		P68-1507
22	1/4" TUBE x 1/4" MIP 90° ELBOW		P68-1506
23	1/2" x CLOSE NIPPLE		P52-1244
24	WIRE CORD - 16/3		P45-2180
25	SLEEVE, CONDUIT - 1/2"		P52-1039
26	LOCKNUT, CONDUIT - 1/2"	4 REQUIRED	P52-1035
27	BUSHING, INSULATING - 1/2"		P52-1043
28	STRAIN RELIEF 90° ELBOW		P52-1059
29	SEAL RING - 1/2"		P52-1038
30	TUBING - 1/4" OD COPPER		P51-1671

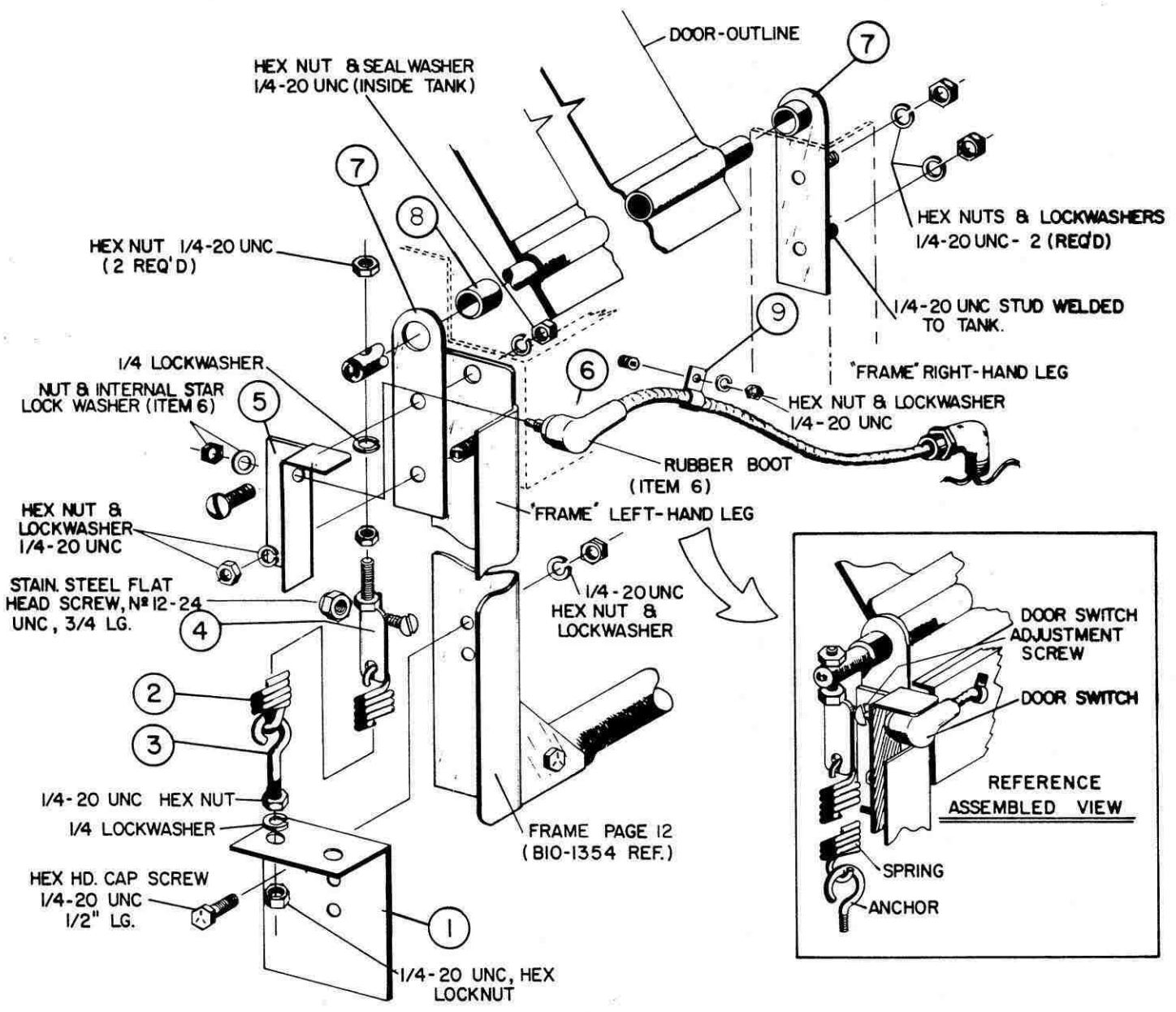


## SGW PRICE PUMP ASSEMBLY



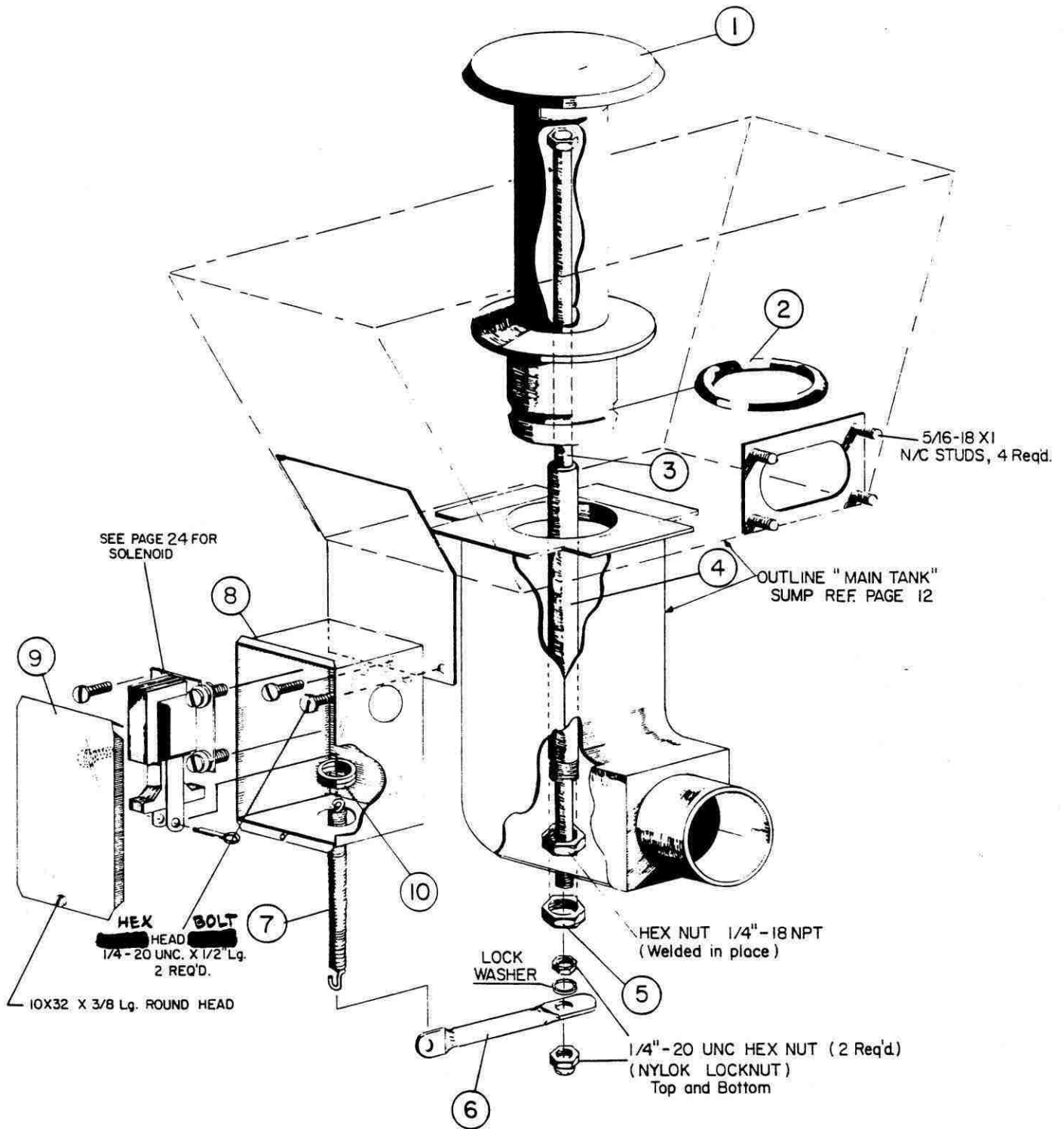






## DOOR PIVOT & SPRING BALANCE ASSEMBLIES



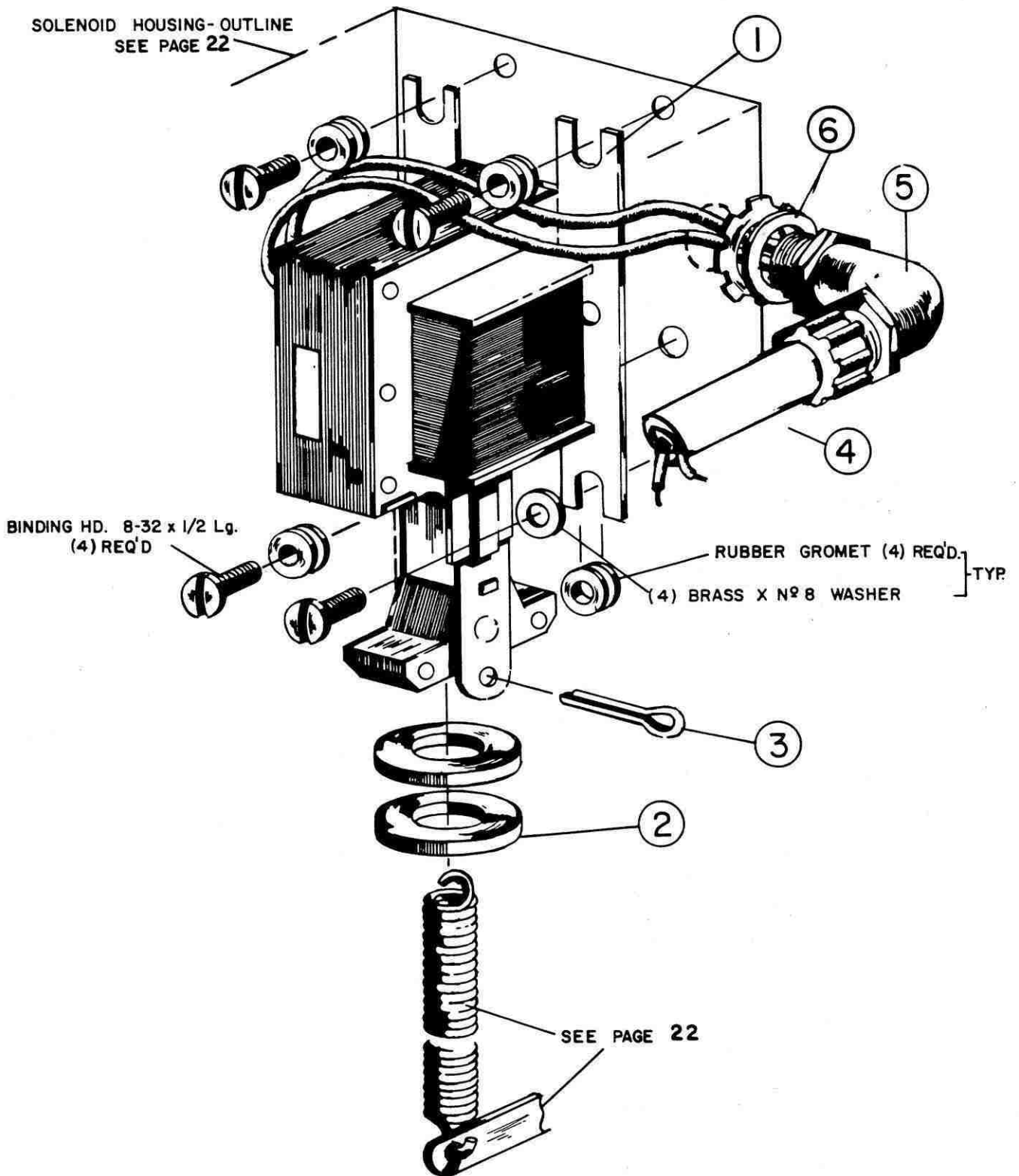


MACHINE, DRAIN ASSEMBLY



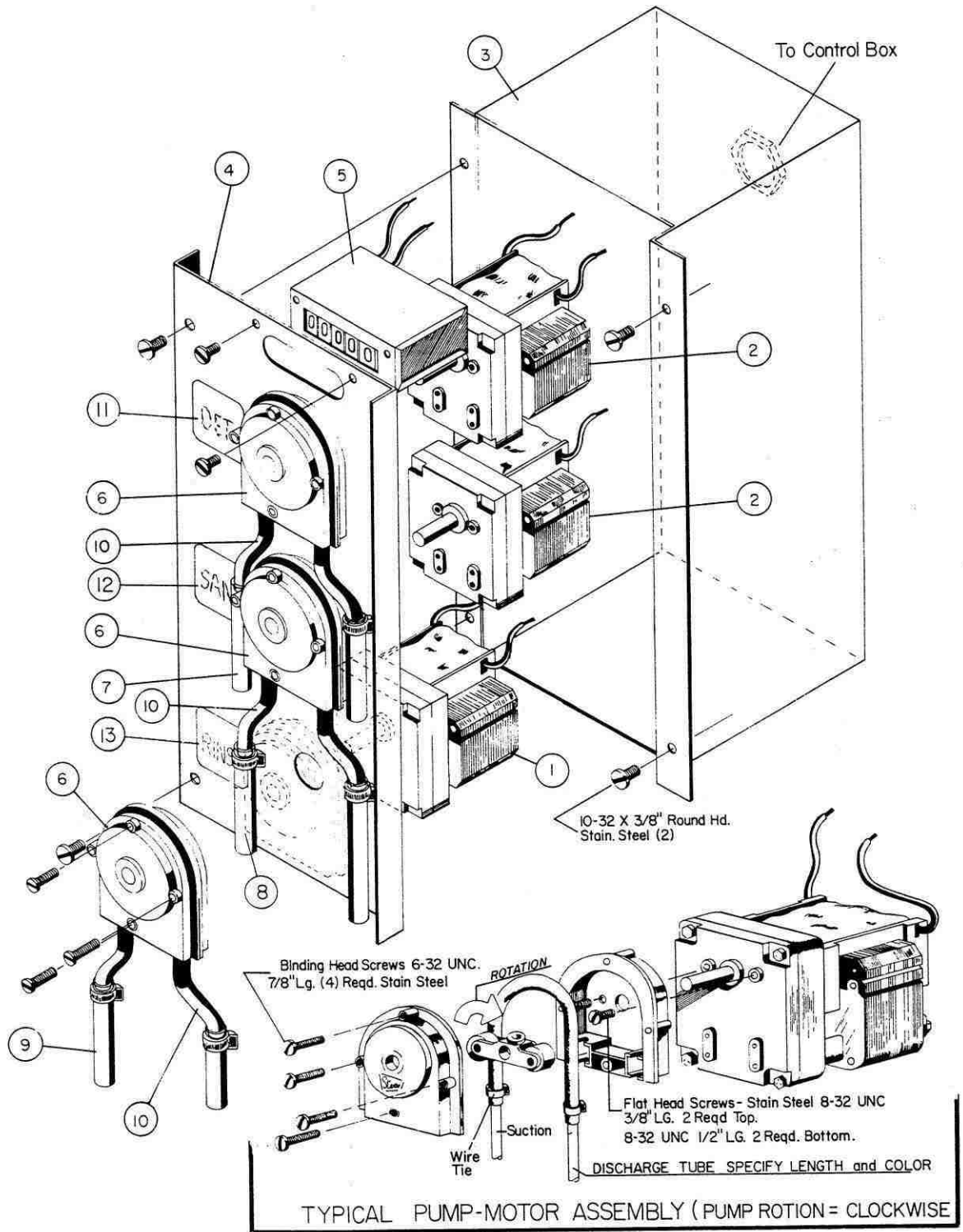


SOLENOID HOUSING- OUTLINE  
SEE PAGE 22



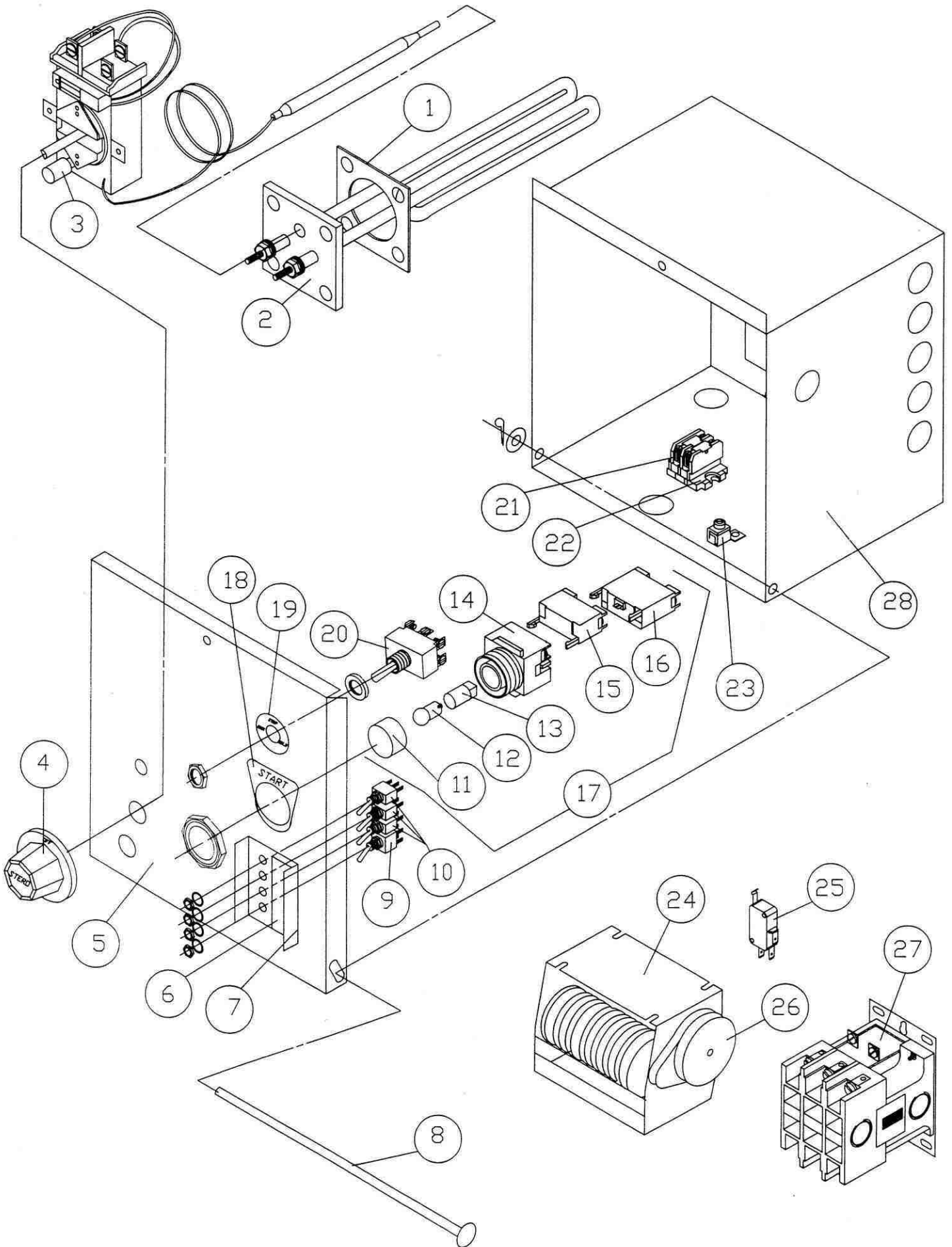
### DRAIN SOLENOID ASSEMBLY





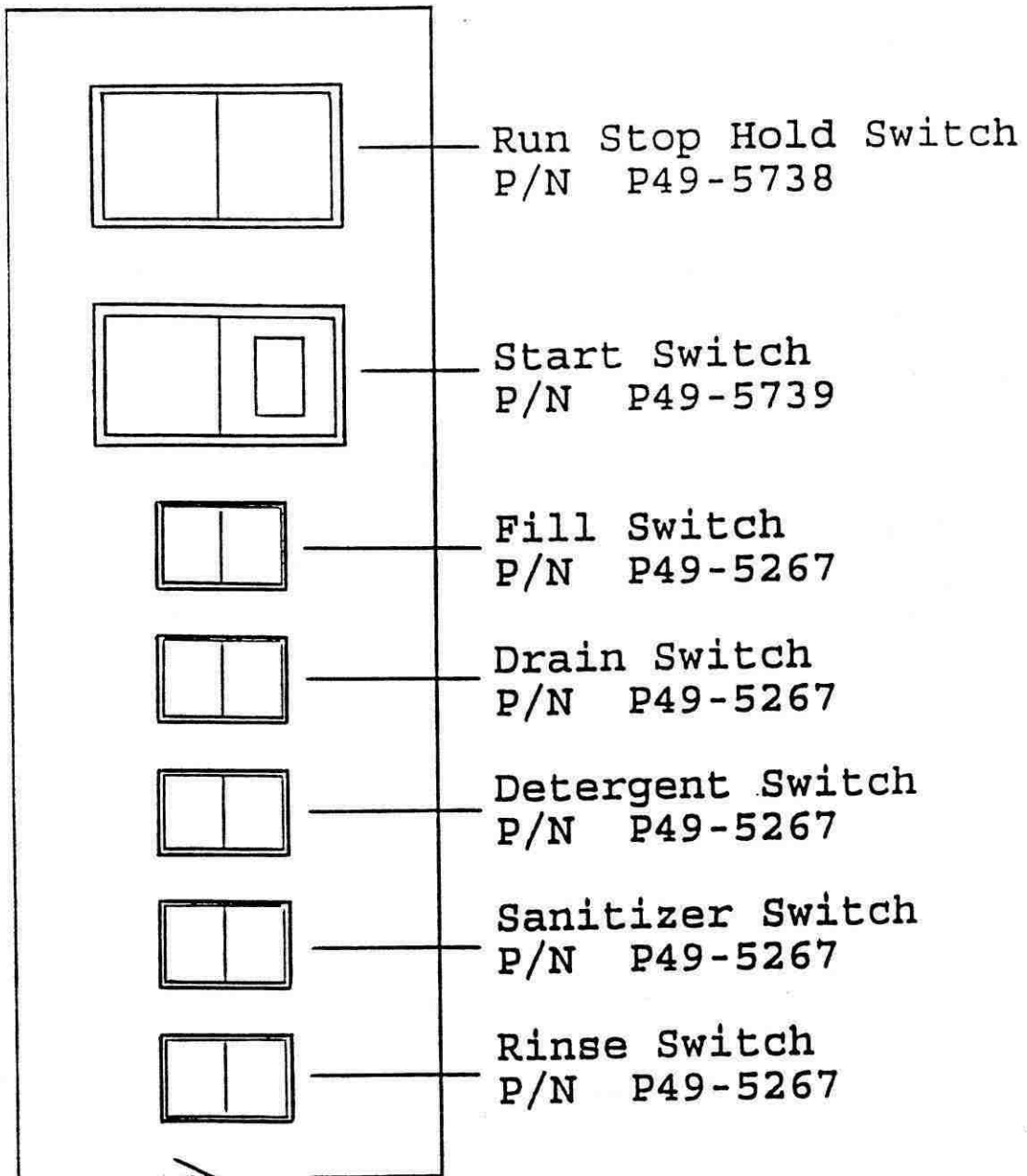
## CHEMICAL PUMP HOUSING ASSEMBLY



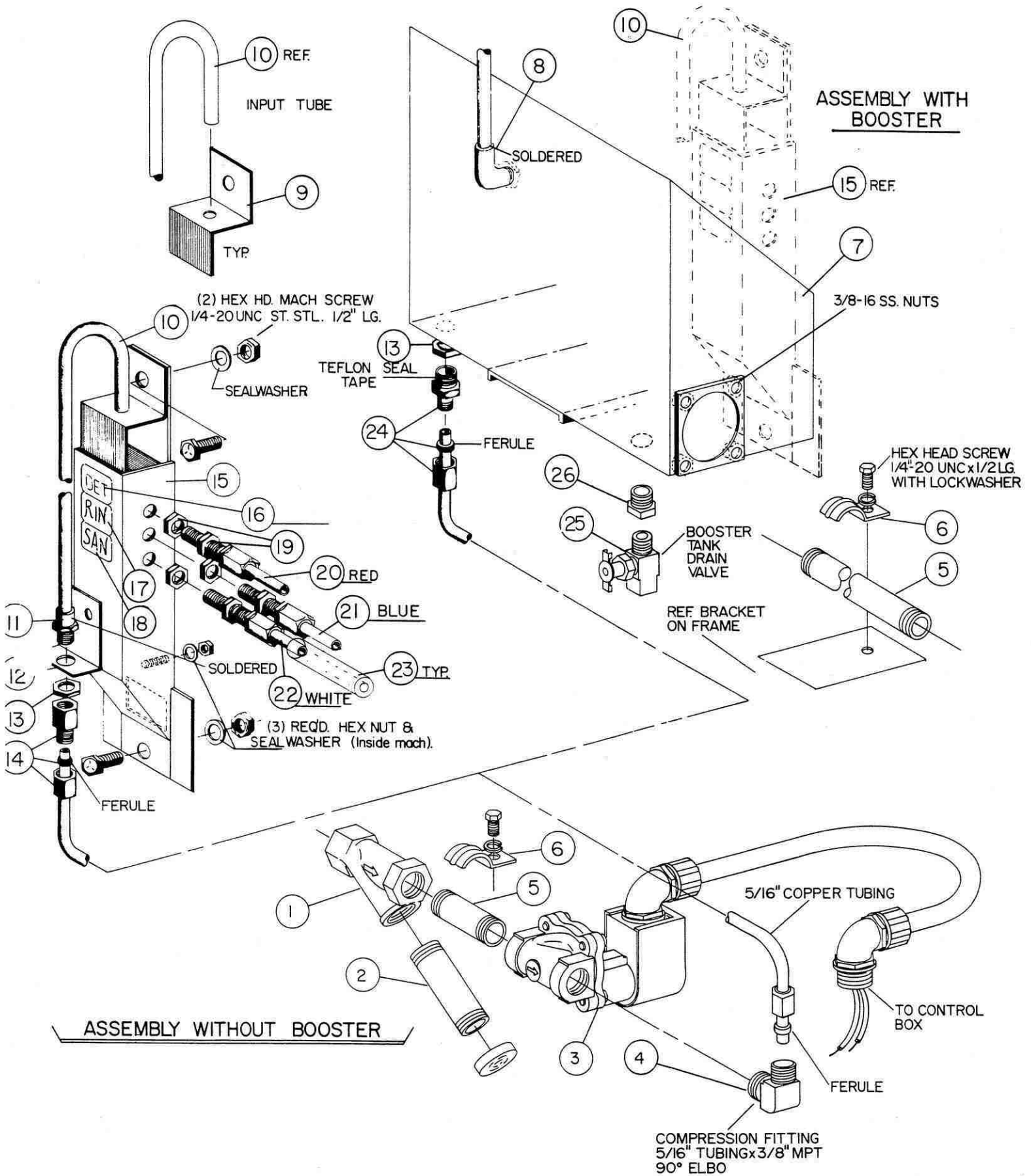


SGW CONTROL PANEL (REVISED 7-94)

Insert after page 28 in SGW manual



Decal SGW  
P/N A69-5732



# WATER SUPPLY PIPING WITH CHEMICAL INJECTION TOWER ASSEMBLY



# SGW CONTROL BOX ASSEMBLY

C10-3295

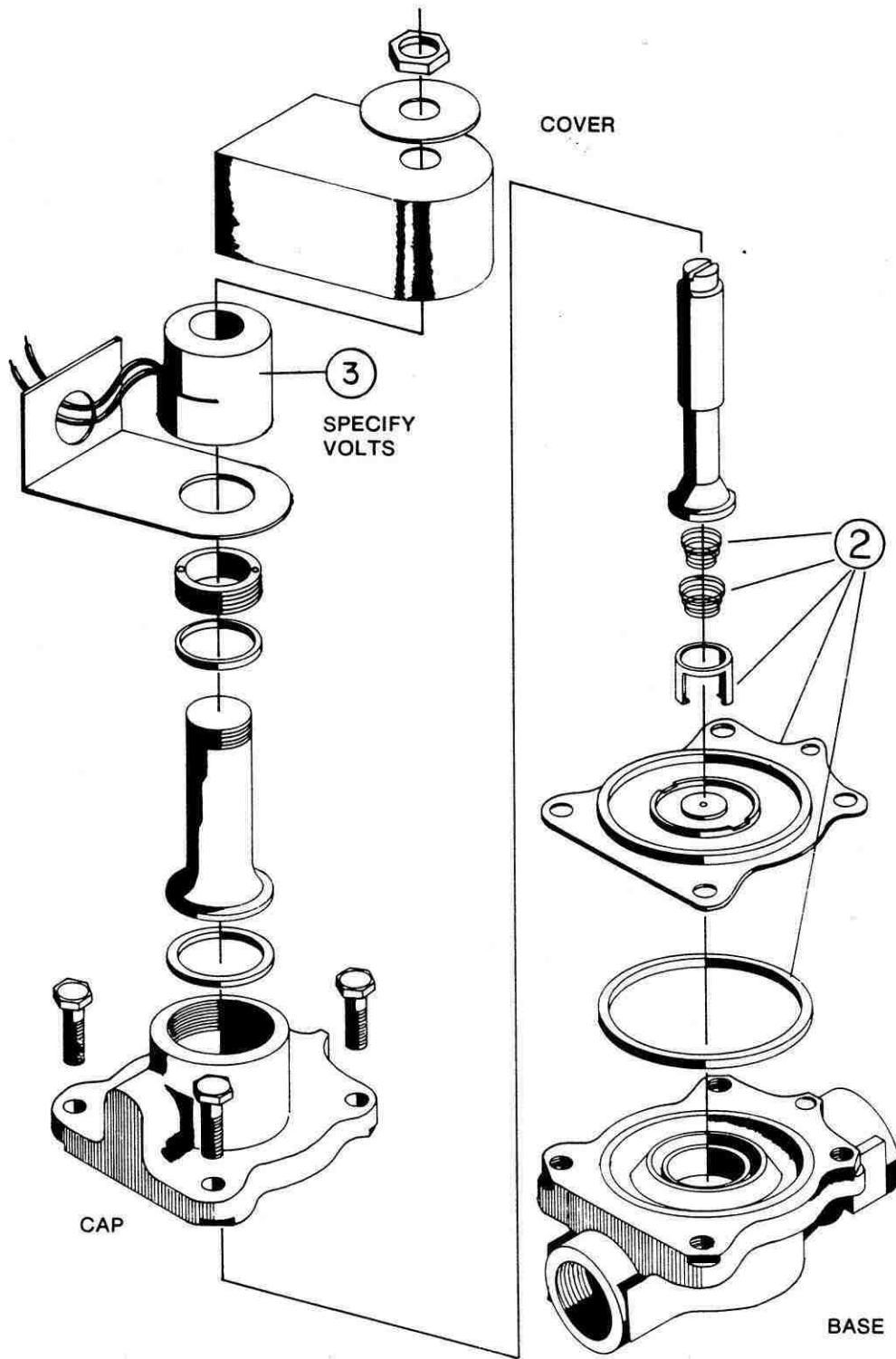
ITEM	DESCRIPTION	REMARKS	PART NO.
1	GASKET, FLANGE		A57-1114
2	2 KW 115 VOLT HEATING ELEMENT		P55-1134
3	HEATER CONTROL THERMOSTAT		P65-1130
4	HEATER CONTROL KNOB		P65-1187
5	CONTROL BOX COVER		C10-3268
6	LABEL, SWITCH FUNCTION		A69-2303
7	SWITCH GUARD		A10-3270
8	COVER HINGE PIN W/WASHER AND COTTER PIN		B10-3269
9	SWITCH - 2 POLE SPRING RETURN		P49-2048
10	SWITCH - 1 POLE SPRING RETURN	3 REQUIRED	P49-2047
11	RED LENS		P49-1311
12	LAMP		P49-1322
13	LAMP HOLDER SHORT		P49-1319
14	MOMENTARY ILLUMINATED PUSH BUTTON		P49-1310
15	N/O CONTACT BLOCK		P49-1303
16	TRANSFORMER		P49-1301
17	PUSH BUTTON START ASSEMBLY		A10-4517
18	LABEL "START"		A69-1429
19	LABEL "STOP / RUN / HOLD"		A69-2296
20	SWITCH - STOP / RUN / HOLD		P49-2043
21	TERMINAL BLOCK	2 REQUIRED	P52-1099
22	TERMINAL BLOCK END SECTION		P52-1100
23	GROUND LUG		P52-1156
24	MECH. TIMER		P46-1858
25	REPLACEMENT MICRO SWITCH		P46-1859
26	MECH. TIMER REPLACEMENT MOTOR		P46-1860
27	CONTACTOR		P47-1157
28	CONTROL BOX HOUSING		C10-3267

NOTE: ITEMS 1 THRU 4 ONLY USED WITH HEATER OPTION

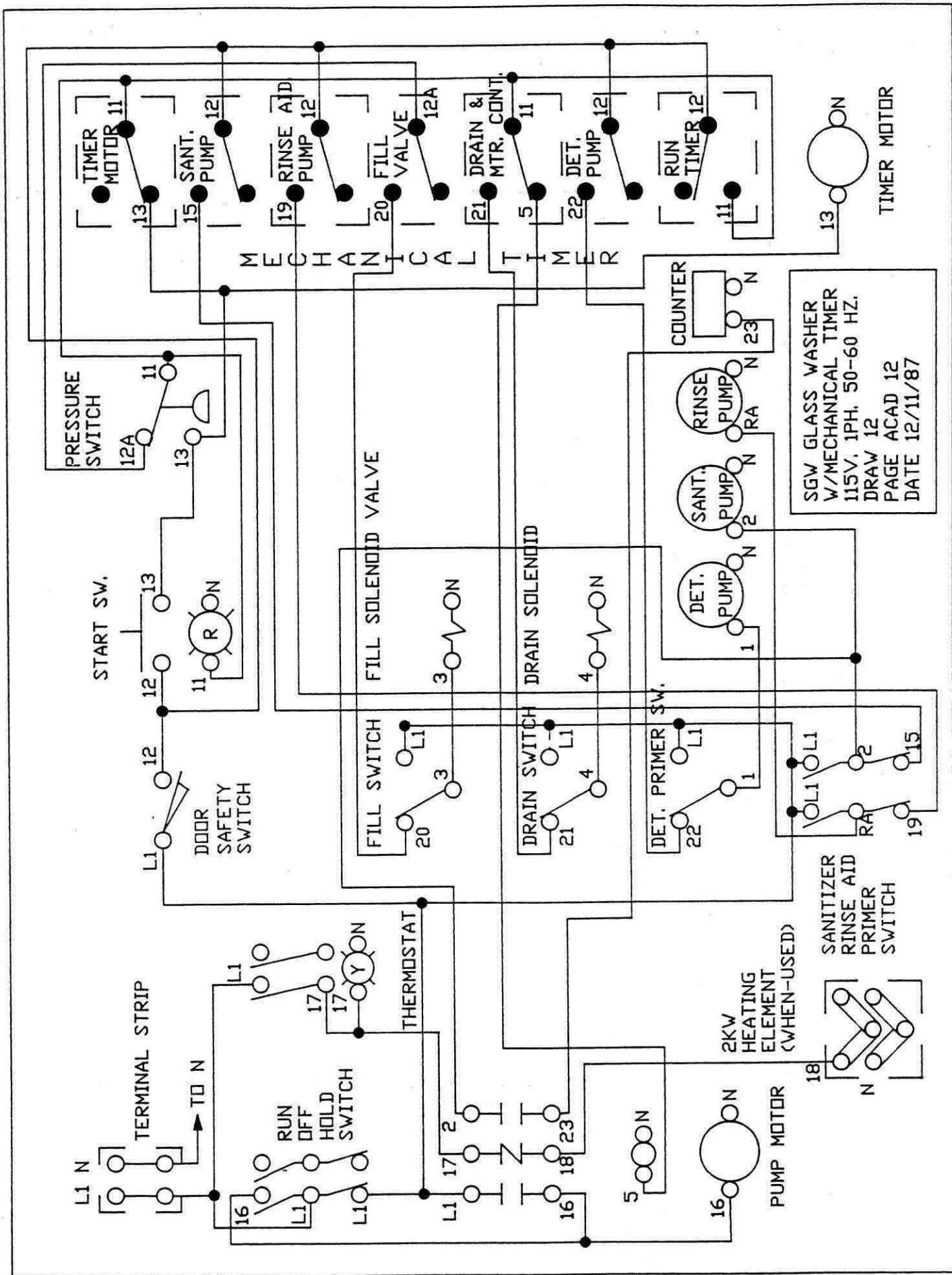
# WATER SUPPLY PIPING WITH CHEMICAL INJECTION TOWER ASSEMBLY

ITEM	DESCRIPTION	REMARKS	PART NO.
1	LINE STRAINER 3/8"		P63-1114
2	LINE STRAINER SCREEN		P63-1116
3	3/8" SOLENOID VALVE		P54-2051
4	5/16" TUBE x 3/8" MIP 90° ELBOW		P68-2069
5	3/8" x 2 1/2" NIPPLE		P68-2063
6	STEEL STRAP 1/2" EMT		P52-1119
7	TANK PRE HEATER	SGW-H OPTION	B10-1436
8	1/2" x 1/2" 90° ELBOW CxM	SGW-H OPTION	P68-1476
9	TOWER BRACKET WATER SUPPLY TUBE		A10-1439
10	WATER SUPPLY INPUT TUBE		B10-1438
11	1/2" x 1/4" ADAPTOR CxM		P68-1469
12	UNION BRACKET SUPPLY TUBE		A10-1437
13	LOCKNUT 1/4"		A10-1441
14	5/16" TUBE x 1/4" FIP ST. FITTING		P68-2068
15	CHEMICAL INJECTOR WATER TOWER		C10-1416
16	LABEL "DETERGENT"		A69-4311
17	LABEL "RINSE ADDITIVE"		A69-1440
18	LABEL "SANITIZER"		A69-4312
19	BULKHEAD FITTING		P68-1019
20	CHEMICAL TUBE - RED		P68-1021
21	CHEMICAL TUBE - BLUE		P68-1023
22	CHEMICAL TUBE - WHITE		P68-1022
23	SIGHT TUBE PVC		A68-1340
24	5/16" TUBE x 1/4" MIP ST. FITTING	SGW-H OPTION	P68-2067
25	NEEDLE VALVE STRAIGHT	SGW-H OPTION	P68-1511
26	1/2" x 1/4" BRASS BUSHING	SGW-H OPTION	P68-1534

NOTE COMPLETE VALVE (SPECIFY  
VOLTAGE) ITEM N° 1 OR FOR "COIL" ITEM  
N° 3



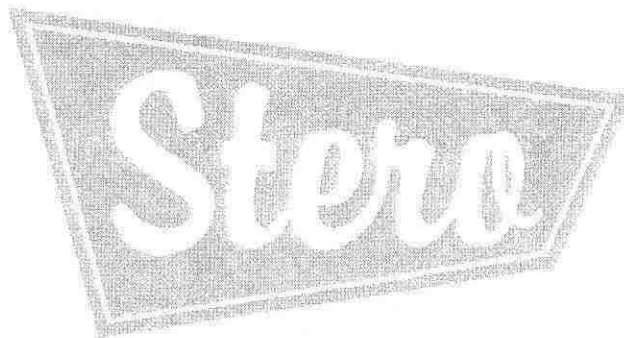




SGW GLASS WASHER  
W/MECHANICAL TIMER  
115V, 1PH, 50-60 HZ.  
DRAW 12  
PAGE ACAD 12  
DATE 12/11/87







The Stero Company  
3200 Lakeville Highway  
Petaluma, CA 94954

(800) 762-7600

Toll free to Parts & Service  
(877) 762-3200