



# STERO SD3T

## TALL DOOR-TYPE DISHWASHER



### STANDARD FEATURES

- .85 gallons per rack
- 58 racks per hour – hot water sanitizing
- Timed wash cycles for 1, 2 or 4 minutes
- Digital control status
- NSF pot and pan listed for 2 & 4 minute cycles
- 180° final rinse assurance
- 70°F rise electric booster heater
- 27" door opening for 18" x 26" sheet pans or 60 quart mixing bowl
- Interchangeable upper and lower wash and rinse arms
- Automatic tank fill
- Door actuated start
- Automatic drain closure
- Exhaust fan control and booster activation included
- Stainless steel construction
- Error notification
- Straight-through or corner operation
- Hot water sanitization
- Pressure gauge

### OPTIONS & ACCESSORIES

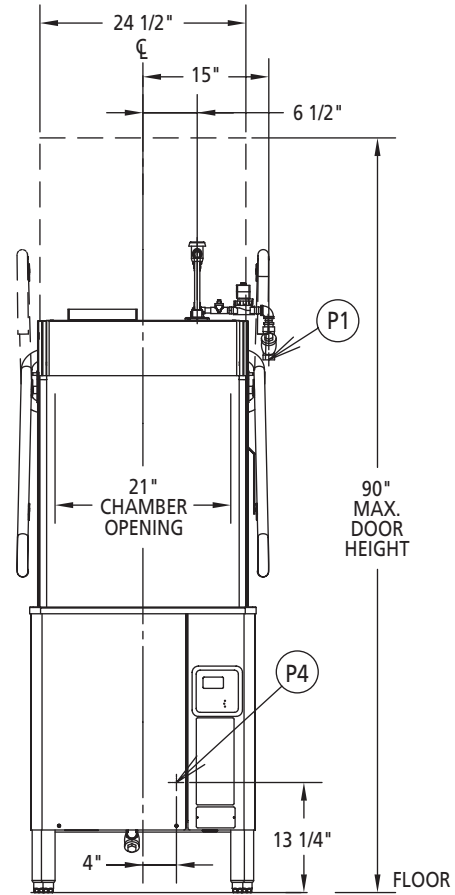
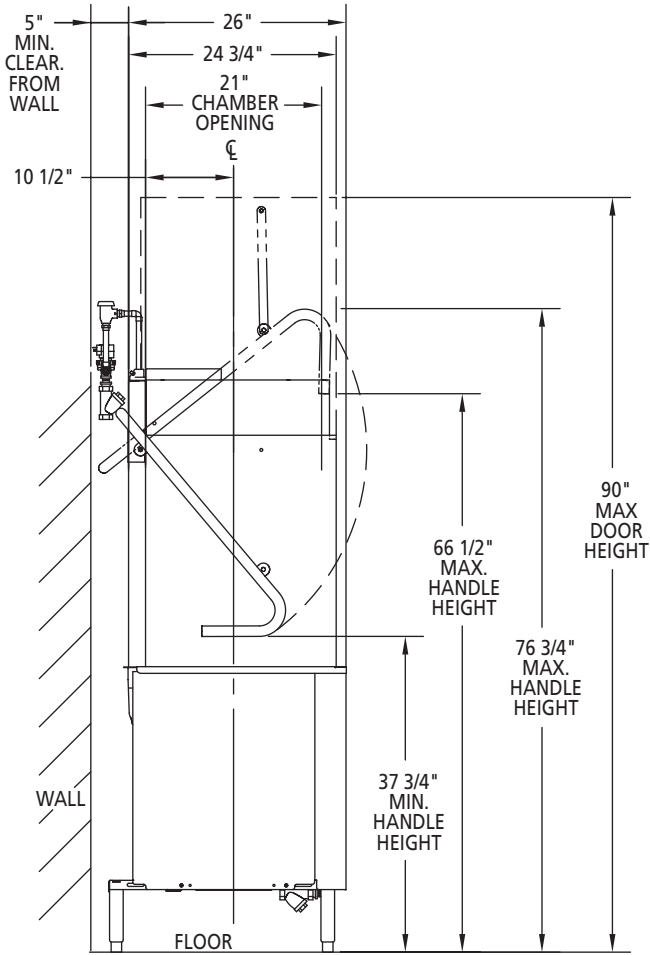
- Drain water tempering kit
- Splash panel kit (for corner installation)
- Seismic feet
- Single point electrical conversion kit
- Pressure reducing valve
- Water hammer arrestor kit



MACHINE RATINGS	SD3T Hot Water Sanitizing
<b>Racks per Hour</b> <i>(Maximum)</i>	58
<b>Wash Motor H.P.</b>	2
<b>Electric Heating Unit</b> <i>(Regulated)</i>	5 KW
<b>Electric Booster Heater</b>	8.5 KW
<b>Rate of Rinse Flow</b> – Gallons per Minute – at 20 PSI Flow Pressure	5.1
<b>Rinse Cycle</b> – Gallons per Rack – at 20 PSI Flow Pressure	.85 – 180°F Minimum
<b>Peak Rate of Drain Flow</b> – Gallons per Minute <i>(Initial rate with full tank)</i>	14
<b>Incoming Water Temperature Required</b> <i>(Minimum)</i>	110°F
<b>Exhaust Requirements</b>	450cfm
<b>Shipping Weight</b> <i>(Approximate)</i>	384 lbs. (with booster)
<b>Crated Dimensions</b>	41.5"L x 35.5"W x 82"H

# STERO SD3T

## TALL DOOR-TYPE DISHWASHER

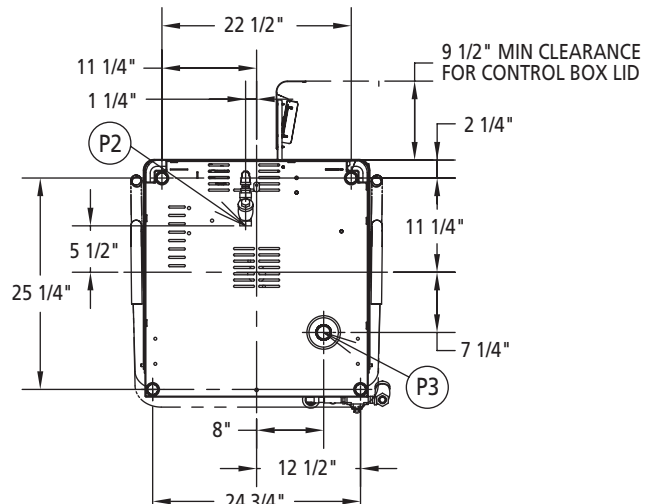


### CONNECTION INFORMATION

(\*AFF - ABOVE FINISHED FLOOR)

#### LEGEND

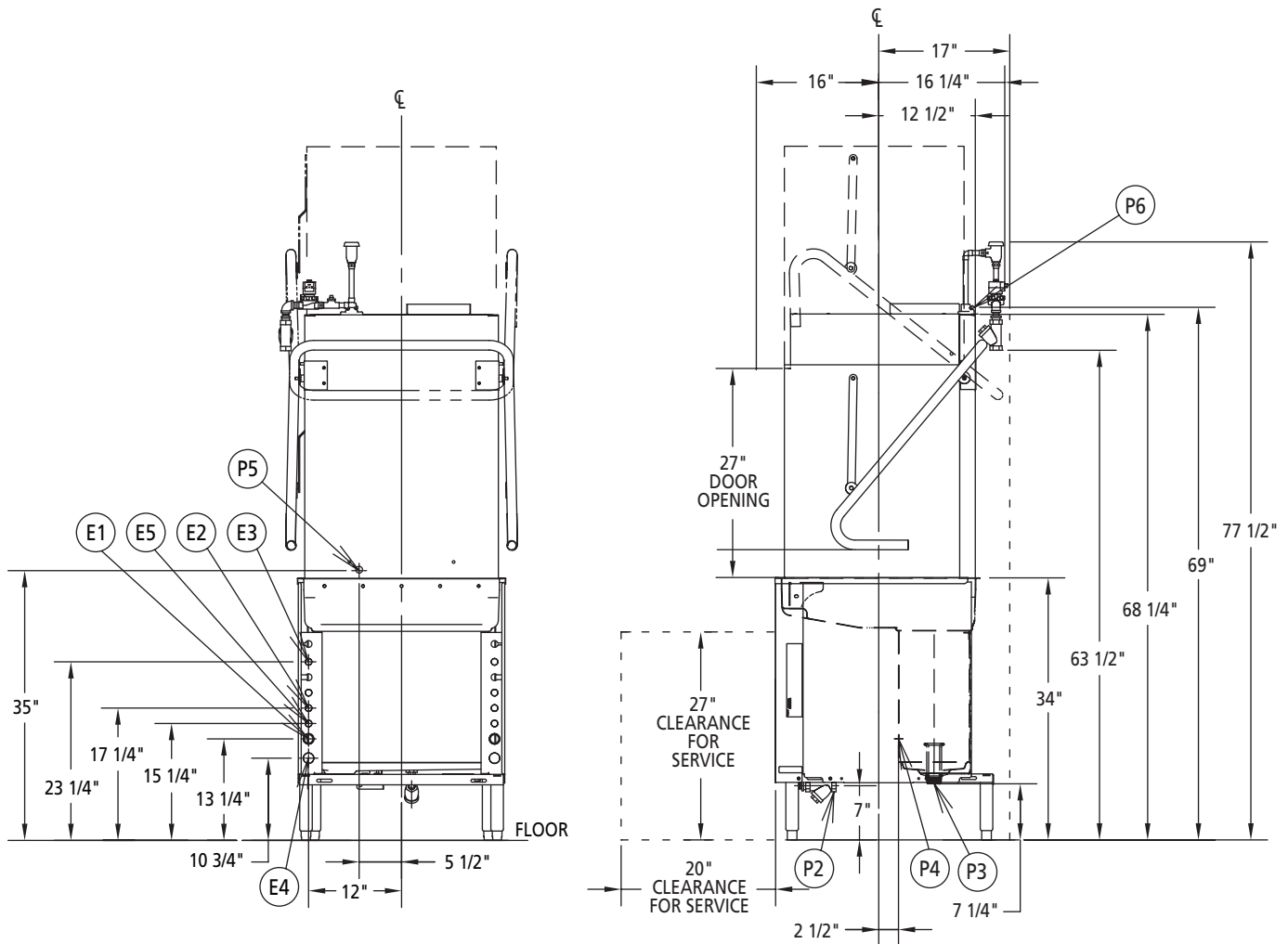
- E1 ELECTRICAL CONNECTION: MOTORS & CONTROLS (INCLUDING ELECTRIC HEAT). 1" OR 3/4" CONDUIT HOLE.
- E2 ELECTRICAL CONNECTION: EXHAUST FAN CONTROL, 1/2" CONDUIT HOLE. (VFC1 & VFC2) 1.5 AMPS @ NAMEPLATE SUPPLY VOLTAGE, "ON"
- E3 ELECTRICAL CONNECTION: RINSE AGENT & SANITIZER FEEDERS, 1/2" CONDUIT HOLE (DPS1 & DPS2) 1.5 AMPS @ NAMEPLATE SUPPLY VOLTAGE, (RPS1 & RPS2) 1.5 AMPS @ NAMEPLATE SUPPLY VOLTAGE
- E4 ELECTRICAL CONNECTION: ELECTRIC BOOSTER, 1" CONDUIT HOLE.
- E5 ELECTRICAL CONNECTION: EXTERNAL BOOSTER CONTROL 1/2" CONDUIT HOLE. (BSTR1 & BSTR2) 0.1 AMPS @ 120 VAC
- P1 COMMON WATER CONNECTION: 120°F WATER MIN. 3/4" FPT. (180°F COMMON WATER CONNECTION W/O ELECTRIC BOOSTER).
- P2 COMMON WATER CONNECTION: (W/ELECTRIC BOOSTER) (110°F WATER MIN. HOT WATER SANITIZING); 3/4" FPT.
- P3 DRAIN: 1-1/2" NPT.
- P4 DETERGENT PROBE SENSOR: REMOVE CAP AND STUD ASSEMBLY TO ACCESS 7/8" HOLE
- P5 DETERGENT FEEDER: REMOVE CAP PLUG TO ACCESS 7/8" HOLE
- P6 RINSE AGENT FEEDER: 1/8" NPT, REMOVE 1/8" NPT PIPE PLUG TO ACCESS TAPPED HOLE.





# STERO SD3T

## TALL DOOR-TYPE DISHWASHER



### SD3T ELECTRIC HEAT, MOTORS & CONTROLS

ELEC. SPECS	RATED AMPS	MINIMUM SUPPLY CIRCUIT CONDUCTOR AMPACITY	MAXIMUM OVERCURRENT PROTECTIVE DEVICE
208-240/60/1	43.0	50	50
208-240/60/3	24.9	30	30
480/60/3	13.4	15	15

### ⚠ WARNING

Electrical and grounding connections must comply with the applicable portions of the National Electrical Code and/or other local electrical codes.

Plumbing connections must comply with applicable sanitary, safety and plumbing codes. Drain and fill line configurations vary, some methods are shown on this drawing.

### BOOSTER AMPACITY RATINGS 8.5KW

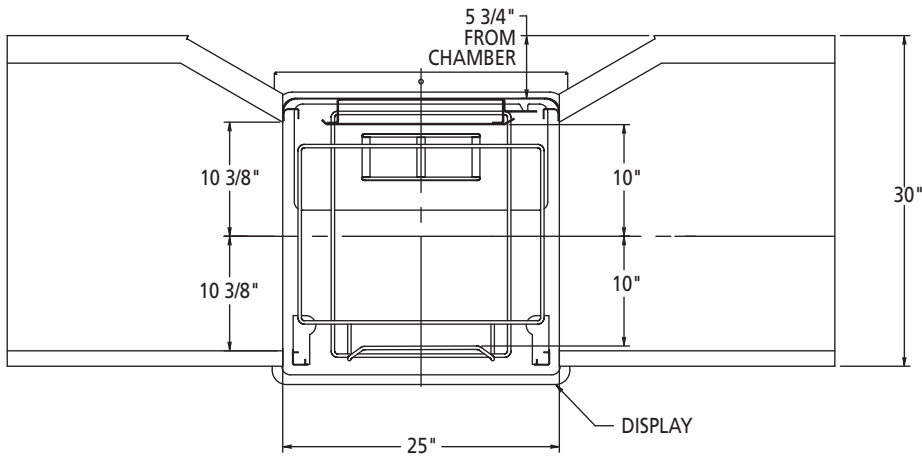
ELEC. SPECS	RATED AMPS	MINIMUM SUPPLY CIRCUIT CONDUCTOR AMPACITY	MAXIMUM OVERCURRENT PROTECTIVE DEVICE
208-240/60/1	35.4	50	50
208-240/60/3	20.4	30	30
480/60/3	10.2	15	15

### OPTIONAL SD3T SINGLE POINT ELECTRICAL SERVICE CONNECTION

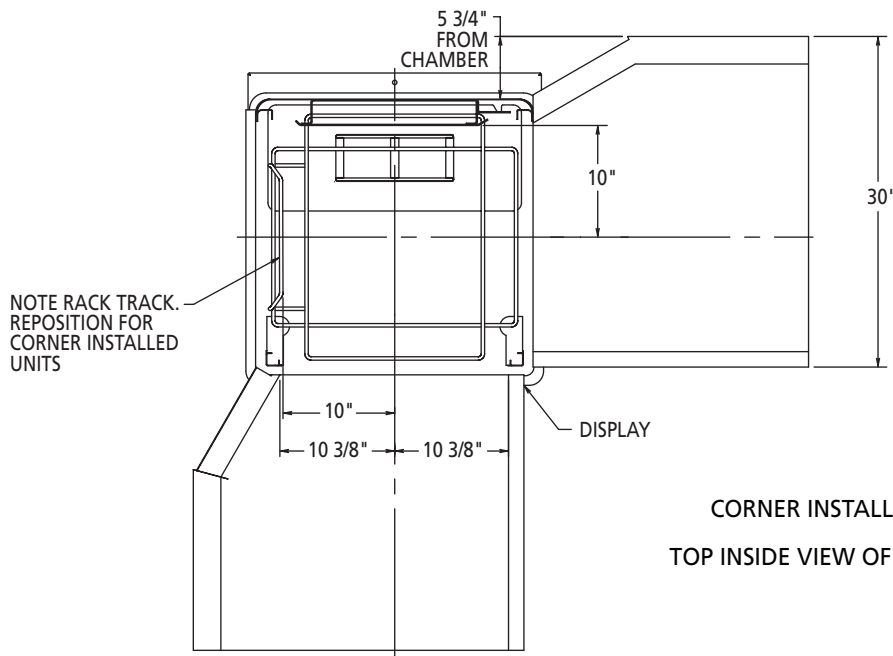
ELEC. SPECS.	RATED AMPS	MINIMUM SUPPLY CIRCUIT CONDUCTOR AMPACITY	MAXIMUM OVERCURRENT PROTECTIVE DEVICE
208-240/60/3	45.4	60	60
480/60/3	23.7	30	30

# STERO SD3T

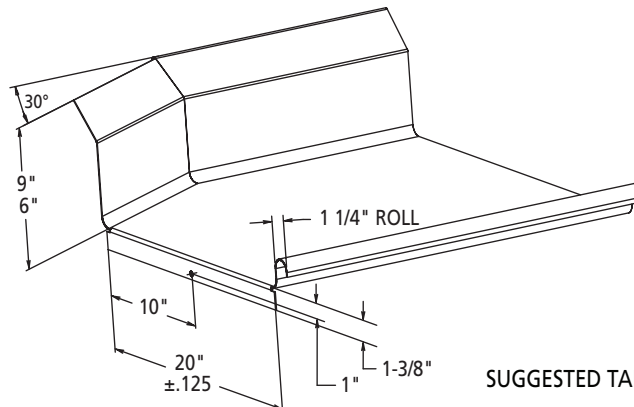
## TALL DOOR-TYPE DISHWASHER



PASS THRU INSTALLATION  
TOP INSIDE VIEW OF MACHINE



CORNER INSTALLATION  
TOP INSIDE VIEW OF MACHINE



SUGGESTED TABLE DESIGN

*In line with its policy to continually improve its products, Stero reserves the right to change materials and specifications without notice.*