



STERO SD1

DOOR-TYPE DISHWASHER



STANDARD FEATURES

- 1.7 gallons per rack
- 37 racks per hour
- Stainless steel construction
- Field adjustable from straight to corner operation
- Door cycle switch controls machine operation
- Filling machine initially, auto fill after first cycle, fill time field adjustable
- Solenoid operated positive seating drain valve – open and closed, no water waste
- Chemical pumps included
- Interchangeable upper and lower wash arms
- 1 H.P. pump motor
- Self-flushing stainless steel pump strainer, large scrap accumulator



| MACHINE RATINGS | SD1 |
|---|---------------------|
| | Chemical Sanitizing |
| Racks per Hour (<i>Maximum</i>) | 37 |
| Wash Motor H.P. | 1 |
| Rinse Cycle – <i>Gallons per Rack</i> | 1.7 Gallon/Rack |
| Incoming Water Temperature (<i>Recommended Minimum</i>) | 140°F |
| Required Minimum Final Rinse Temperature | 120°F |

| ELECTRICAL CONNECTION MOTORS AND ELECTRIC TANK HEAT | | | |
|--|------------|---|---------------------------------------|
| ELECTRIC SPECS. | RATED AMPS | MINIMUM SUPPLY CIRCUIT CONDUCTOR AMPACITY | MAXIMUM OVERCURRENT PROTECTIVE DEVICE |
| 120/60/1 | 14.0 | 20 | 20 |

| MACHINE WEIGHT | | |
|----------------|------------|-----------------|
| MODEL | NET WEIGHT | SHIPPING WEIGHT |
| SD1 | 210 lbs. | 235 lbs. |

OVERALL DIMENSIONS: 69"H x 29"W x 32-1/2"D

STERO SD1

DOOR-TYPE DISHWASHER



⚠ WARNING

Electrical and grounding connections must comply with the applicable portions of the National Electrical Code and/or other local electrical codes.

Plumbing connections must comply with applicable sanitary, safety and plumbing codes. Drain and fill line configurations vary, some methods are shown on this drawing.

PLUMBING NOTES:

WATER HAMMER ARRESTOR (MEETING ASSE-1010 STANDARD OR EQUIVALENT) TO BE SUPPLIED (BY OTHERS) IN COMMON WATER SUPPLY LINE AT SERVICE CONNECTION. RECOMMENDED WATER HARDNESS TO BE 3 GRAINS OR LESS FOR BEST RESULTS.

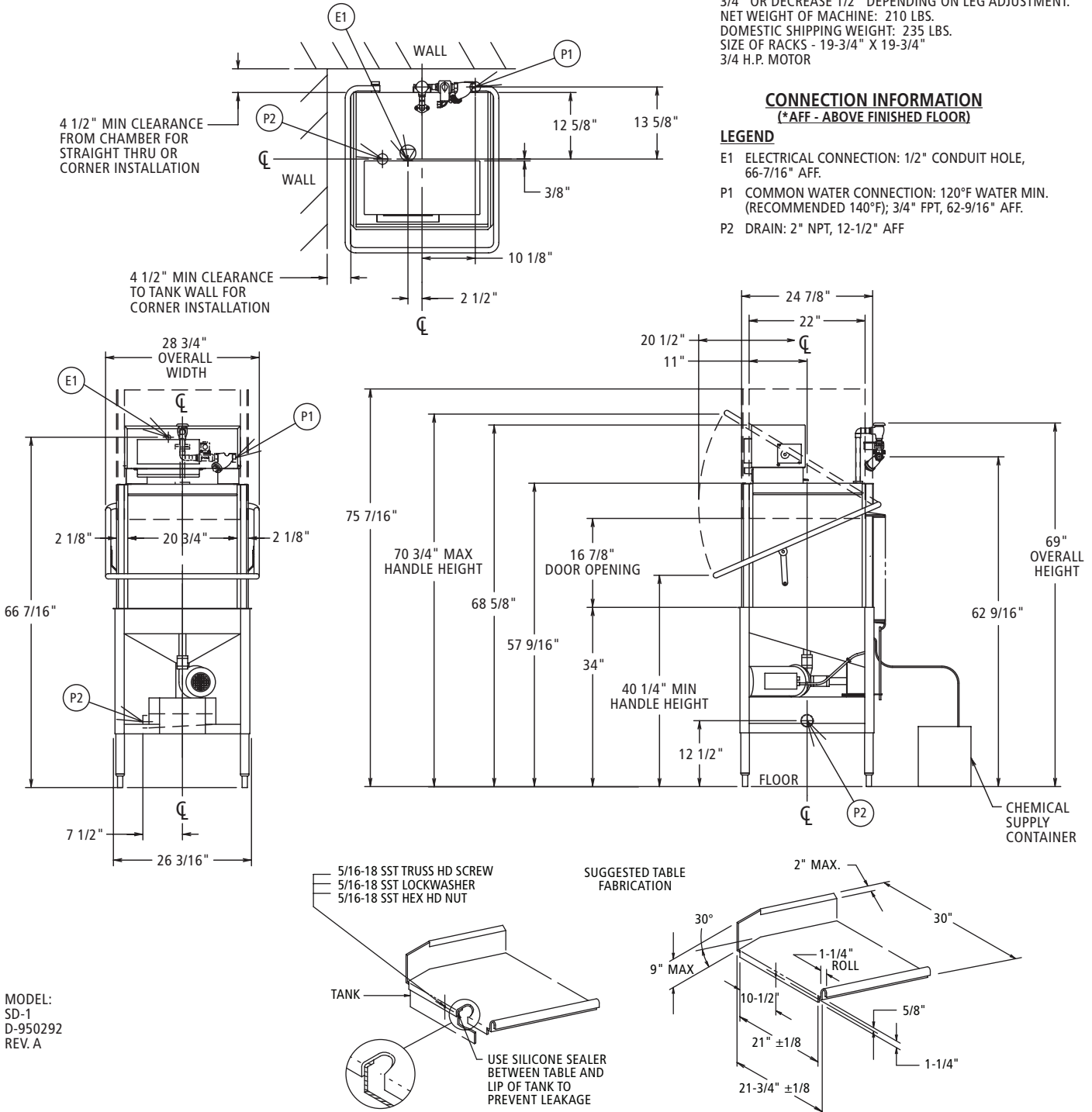
MISCELLANEOUS NOTES:

ALL DIMENSIONS TAKEN FROM FLOOR LINE MAY INCREASE 3/4" OR DECREASE 1/2" DEPENDING ON LEG ADJUSTMENT.
 NET WEIGHT OF MACHINE: 210 LBS.
 DOMESTIC SHIPPING WEIGHT: 235 LBS.
 SIZE OF RACKS - 19-3/4" X 19-3/4"
 3/4 H.P. MOTOR

CONNECTION INFORMATION (*AFF - ABOVE FINISHED FLOOR)

LEGEND

- E1 ELECTRICAL CONNECTION: 1/2" CONDUIT HOLE, 66-7/16" AFF.
- P1 COMMON WATER CONNECTION: 120°F WATER MIN. (RECOMMENDED 140°F); 3/4" FPT, 62-9/16" AFF.
- P2 DRAIN: 2" NPT, 12-1/2" AFF



MODEL:
 SD-1
 D-950292
 REV. A

In line with its policy to continually improve its products, Stero reserves the right to change materials and specifications without notice.