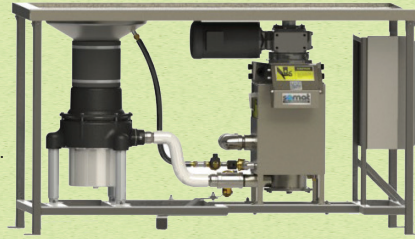


# Waste Reduction Solutions

## MP4C Mini-Press Saving Space While Delivering Big Results

The Somat MP4C System is ideal for processing food waste within small foodservice operations.

Available in both close-coupled (self-contained) or remote (custom) configurations, the small footprint allows for easy installation. The unit is pre-piped from the factory reducing labor time for installation as well. The MP4C System delivers big results in a space saving design, allowing up to 87% reduction in waste volume and keeps solids from the municipal waste system. Processing at 700 lbs/hr of foodwaste, the MP4C is your solution for small scale pulping with the benefits of a full pulping system.

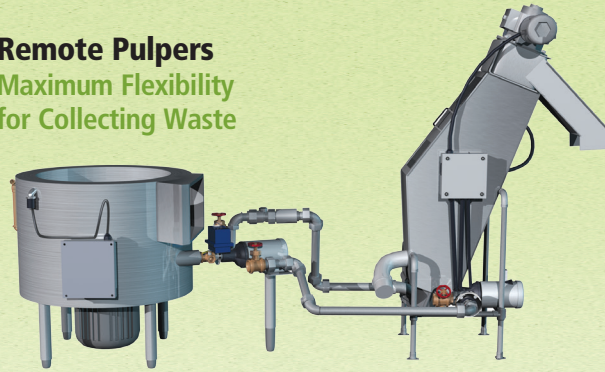


## Somat Close-Coupled Pulper/Hydra-extractor Reduce Waste at the Source with a Stand-alone Food Waste System

Somat Close-Coupled Pulping Systems are stand-alone food waste units comprised of a pulper directly connected to a Hydra-extractor. They provide a convenient means to reduce waste volume at the collection source where facility constraints do not permit more centralized food waste collection. This process reduces the volume of waste by 8 to 1 and weight by 2 to 1.



## Remote Pulpers Maximum Flexibility for Collecting Waste



Somat Remote Pulpers are part of a system comprised of a pulper (or pulpers) and a remotely located Hydra-extractor separated over a distance by interconnecting piping and wiring. Unit separation distances may be as close as a few feet, across a room or several hundred yards away. Units can be located on differing floor levels. Maximum separation distances are limited only by the practical aspect of pumping the food waste slurry. With proper design, long distances can be accommodated.

## Somat DeHydrator The High-efficiency Food Waste Recycling Machine

The DeHydrator machine macerates food waste along with compostable disposables, producing a humus-rich soil amendment without the use of enzymes, fresh water or other by-products resulting in zero sewer and landfill impact. The DeHydrator does not require any special installation or hook-ups. Simply connect to an electrical outlet and the system is ready to operate. The one-touch control is fully automatic, sensing the status of the operation. The DeHydrator can be fed directly from the extractor, providing an additional 8 to 1 volume and weight reduction.



**Somat Company**  
165 Independence Court • Lancaster, PA 17601

**Phone: 1-800-237-6628**  
Fax: (717) 291-0877  
[www.somatcompany.com](http://www.somatcompany.com)

a division of ITW Food Equipment Group, LLC



Somat Company of Lancaster, Pennsylvania, a division of the Illinois Tool Works Company, is the industry leader in waste reduction technology, providing complete solutions to your waste reduction needs. Somat is an innovator and leader for both engineering and production of waste handling systems used throughout the world.

Revision 2.20



## Equipment Solutions For Food Waste Reduction



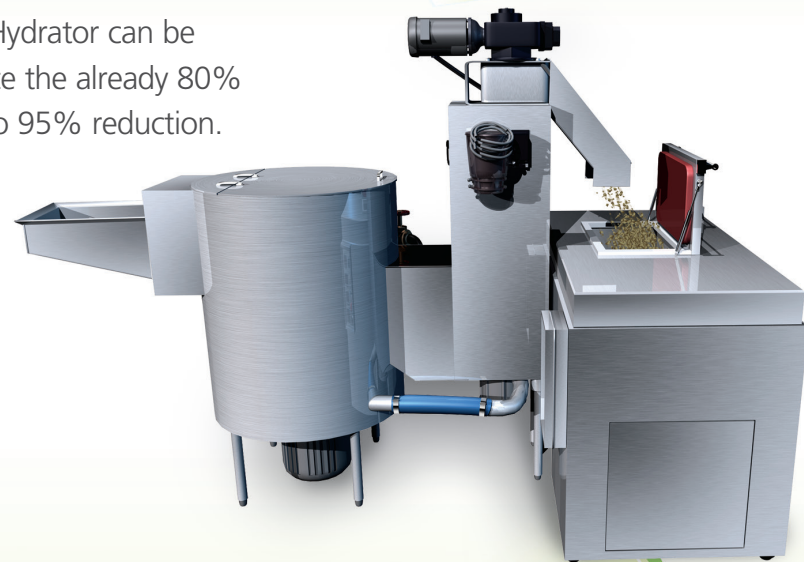
# THE POWER TO TRANSFORM WASTEFUL TO SUSTAINABLE



Compostable plastic utensils, plates and cups can be added.

## Somat's Pulper, with an added Somat DeHydrator

The Somat DeHydrator can be added to reduce the already 80% reduced pulp to 95% reduction.



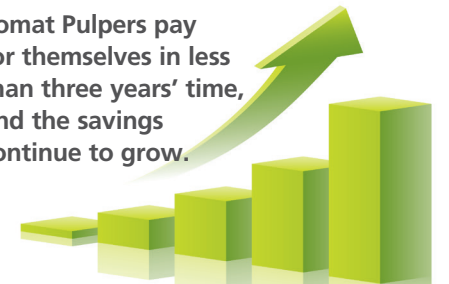
## Foodservice waste

Foodservice waste is sent to the Somat System.



## Cost Savings

Somat Pulpers pay for themselves in less than three years' time, and the savings continue to grow.



Somat Pulpers save money

## Healthy produce grown from the rich soil

The trash can be converted to a rich soil amendment in a month's time.



## Processed waste from the Somat System

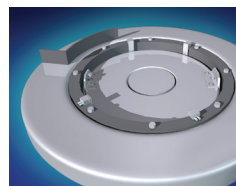
## Compost to be used as a rich soil amendment



## What's inside a Somat Pulper

Inside the pulper, a heavy-duty cutting mechanism consisting of rotatable and removable cutting components create a vortex turning solid waste into a slurry which is sent to the Hydra-extractor for dewatering.

The dewatering helps the pulp become lighter reducing waste volume by up to 80%.



Scan this code to see videos of our products in action and technical service videos.