



# STERO SG GLASSWASHER



SG42



SG40

## STANDARD FEATURES

- 34 racks per hour rate
- .74 gallons of water per rack
- Chemical sanitizing
- Low chemical alert indicators
- Self-priming chemical pumps
- Error notification
- Digital cycle/temperature display
- Interchangeable upper and lower wash and rinse arms
- Pumped drain
- Pumped rinse
- 12" door opening
- Automatic tank fill
- Chemical pumps standard

## OPTIONS & ACCESSORIES

- Power cord kits



MACHINE RATINGS	SG Chemical Sanitizing
Racks per Hour Rate	34
Cycle Time – Seconds	105
Tank Heat	1.8 KW
Water Usage Per Rack – Gallons	.74
Peak Drain Flow – Gallons per Minute	4.0
Incoming Water Temperature Required (minimum)	120°

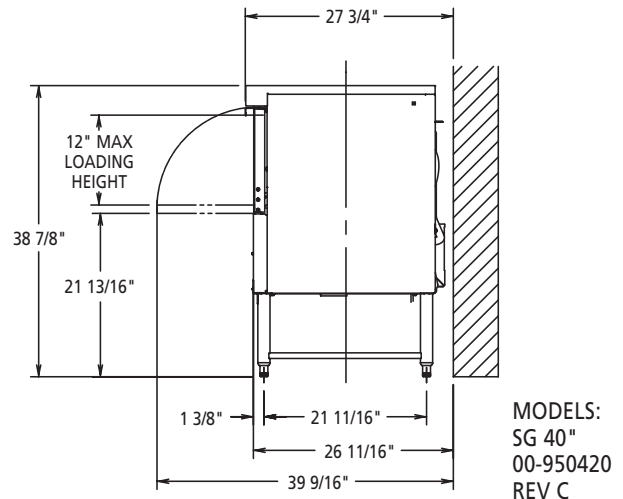
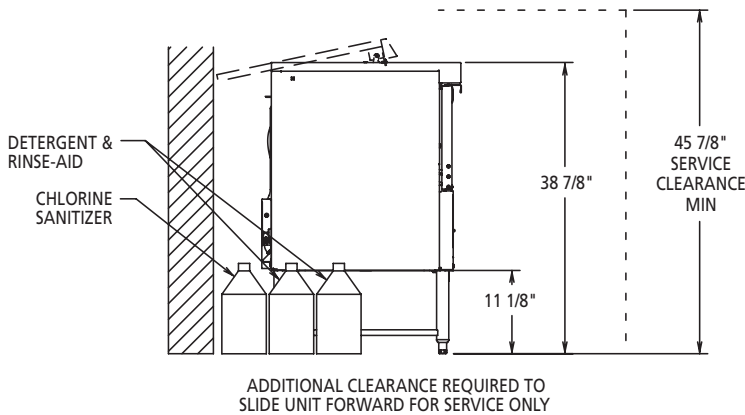
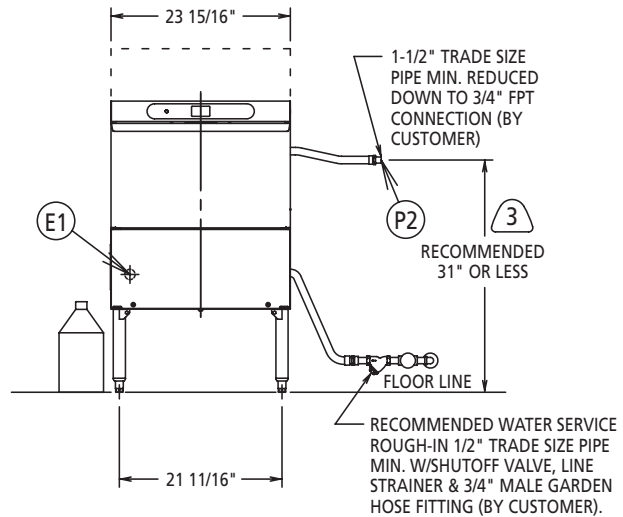
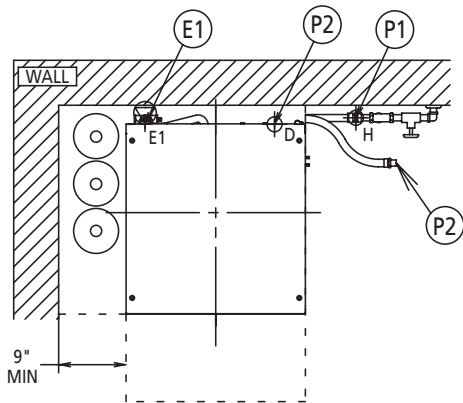
HEAT OUTPUT, BTU/HR.		
MODEL	LATENT	SENSIBLE
SG	1900	800

SHIPPING WEIGHTS		
MODEL	NET WEIGHT	DOMESTIC SHIPPING WEIGHT
SG	150 lbs.	170 lbs.

MODEL	VOLTS/HERTZ/PHASE	RATED AMPS	MIN SUPPLY CKT CONDUCTOR AMPACITY	MAX PROTECTIVE DEVICE
SG	120/60/1	15.4	20	20

NOTE: FOR SUPPLY CONNECTIONS, USE COPPER WIRE ONLY RATED AT 90°C MINIMUM  
ACCESSORY CORD KIT AVAILABLE FOR ALL MACHINES.

# STERO SG GLASSWASHER



## ⚠ WARNING

Do not premix other chemicals and sodium hypochlorite (liquid bleach).  
Mixing may cause hazardous gas to form.

## NOTICE

Required flowing water pressure to the dishmachine is 15-65 PSIG. If pressures higher than 65 PSIG are present, a pressure regulating valve must be installed in the water line to the dishmachine (by others).

Pressure gauge not required on pumped rinse machines.

Important: The chemical containers should be placed no higher than 24" above floor.

If chemical containers are to be placed in cabinet adjacent to machine, a 1/2" dia. hole is required in the cabinet to run chemical supply line.

Use only 6% or 8.4% sodium hypochlorite (liquid bleach) as sanitizing chemical to insure proper operation of dishmachine.

Certain materials, including silver plate, aluminum and pewter are attacked by sodium hypochlorite (liquid bleach). See instructional manual.

## NOTES:

- All vertical machine dimensions taken from floor may be increased by .875" or decreased by .375".
- Moist air escapes from the door. Use only moisture resistant materials adjacent to dishmachine sides and top.
- A vent hood is not recommended above the undercounter dishmachine since it does not produce excessive vapors.

## PLUMBING NOTES:

- Water hammer arrestor (meeting ASSE-1010 Standard or equivalent) to be supplied (by others) in common water supply line at service connection.
- Recommended water hardness to be 3 grains or less for best results.
- If drain hose is looped above a sink, the loop must not exceed 51" AFF.

## CONNECTION INFORMATION

(AFF = ABOVE FINISHED FLOOR)

## LEGEND

- E1 ELECTRICAL CONNECTION: 1-3/8" DIA. HOLE FOR 1" TRADE SIZE CONDUIT; 15-5/16" AFF
- P1 SINGLE FILL AND RINSE CONNECTION: 3/4" FEMALE GARDEN HOSE FITTING ON 6' LONG HOSE SUPPLIED WITH MACHINE; 120°F WATER MIN. FOR SG, 140°F RECOMMENDED.
- P2 DRAIN CONNECTION: 5/8" BARB FITTING WITH 6' LONG HOSE SUPPLIED WITH MACHINE.

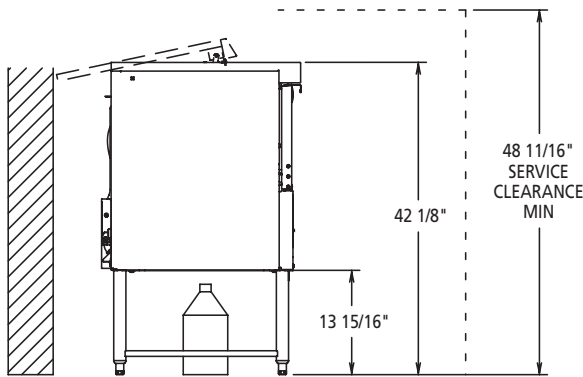
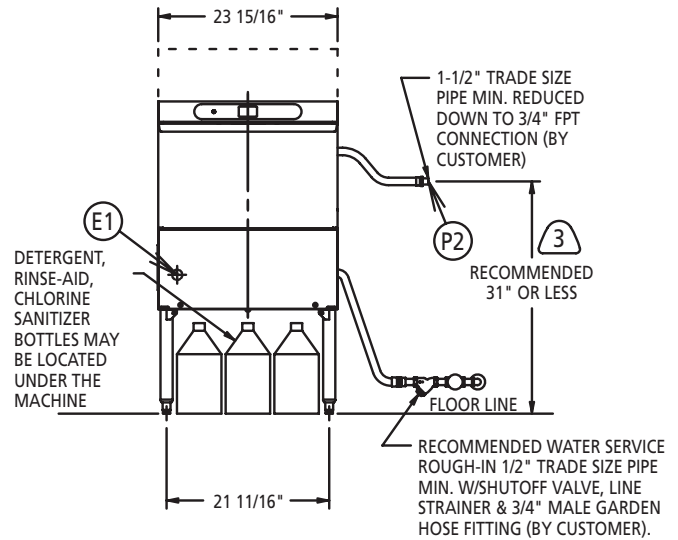
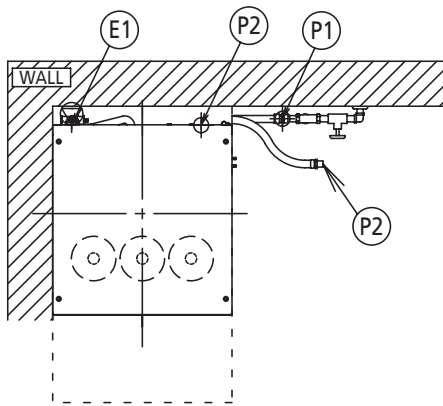
## ⚠ WARNING

Electrical and grounding connections must comply with the applicable portions of the National Electrical Code and/or other local electrical codes.

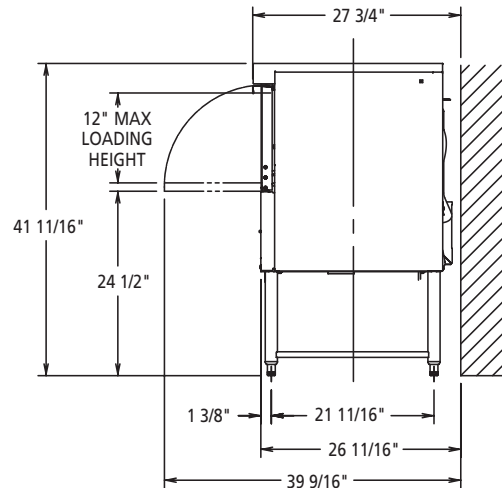
Plumbing connections must comply with applicable sanitary, safety and plumbing codes. Drain and fill line configurations vary, some methods are shown on this drawing.



# STERO SG GLASSWASHER



ADDITIONAL CLEARANCE REQUIRED TO SLIDE UNIT FORWARD FOR SERVICE ONLY



MODELS:  
SG 42"  
00-950420  
REV C

### ⚠ WARNING

**Do not premix other chemicals and sodium hypochlorite (liquid bleach).  
Mixing may cause hazardous gas to form.**

### NOTICE

Required flowing water pressure to the dishmachine is 15-65 PSIG. If pressures higher than 65 PSIG are present, a pressure regulating valve must be installed in the water line to the dishmachine (by others).

Pressure gauge not required on pumped rinse machines.

Important: The chemical containers should be placed no higher than 24" above floor.

If chemical containers are to be placed in cabinet adjacent to machine, a 1/2" dia. hole is required in the cabinet to run chemical supply line.

Use only 6% or 8.4% sodium hypochlorite (liquid bleach) as sanitizing chemical to insure proper operation of dishmachine.

Certain materials, including silver plate, aluminum and pewter are attacked by sodium hypochlorite (liquid bleach). See instructional manual.

### NOTES:

- All vertical machine dimensions taken from floor may be increased by .875" or decreased by .375".
- Moist air escapes from the door. Use only moisture resistant materials adjacent to dishmachine sides and top.
- A vent hood is not recommended above the undercounter dishmachine since it does not produce excessive vapors.

### PLUMBING NOTES:

- Water hammer arrestor (meeting ASSE-1010 Standard or equivalent) to be supplied (by others) in common water supply line at service connection.
- Recommended water hardness to be 3 grains or less for best results.
- If drain hose is looped above a sink, the loop must not exceed 51" AFF.

### CONNECTION INFORMATION

(AFF = ABOVE FINISHED FLOOR)

### LEGEND

- E1 ELECTRICAL CONNECTION: 1-3/8" DIA. HOLE FOR 1" TRADE SIZE CONDUIT; 18-1/8" AFF
- P1 SINGLE FILL AND RINSE CONNECTION: 3/4" FEMALE GARDEN HOSE FITTING ON 6' LONG HOSE SUPPLIED WITH MACHINE; 120°F WATER MIN. FOR SG, 140°F RECOMMENDED.
- P2 DRAIN CONNECTION: 5/8" BARB FITTING WITH 6' LONG HOSE SUPPLIED WITH MACHINE.

### ⚠ WARNING

**Electrical and grounding connections must comply with the applicable portions of the National Electrical Code and/or other local electrical codes.**

**Plumbing connections must comply with applicable sanitary, safety and plumbing codes. Drain and fill line configurations vary, some methods are shown on this drawing.**

---

# STERO SG

## GLASSWASHER

---



*In line with its policy to continually improve its products, Stero reserves the right to change materials and specifications without notice.*